

## A key to the identification of *Cerceris* Latreille (Hymenoptera, Sphecidae) of Kazakhstan and Middle Asia

V.L. Kazenas

Institute of Zoology, Academgorodok, Almaty, 480060, Kazakhstan

More than 100 species of *Cerceris* are known to occur in Central-Asian region, i.e., in the republics of Kazakhstan, Kyrgyzstan, Tajikistan, Turkmenistan, and Uzbekistan (Kazenas, 1978, 1984). They were all revised in my book "The digger wasps of the genus *Cerceris* of Middle Asia and Kazakhstan" (Kazenas, 1984) but because of space limitations beyond my control I was not able to include a key to their identification. An updated version of the key has been translated into English and is published below. The number in parentheses after each species name refers to the page on which this species is treated in the book.

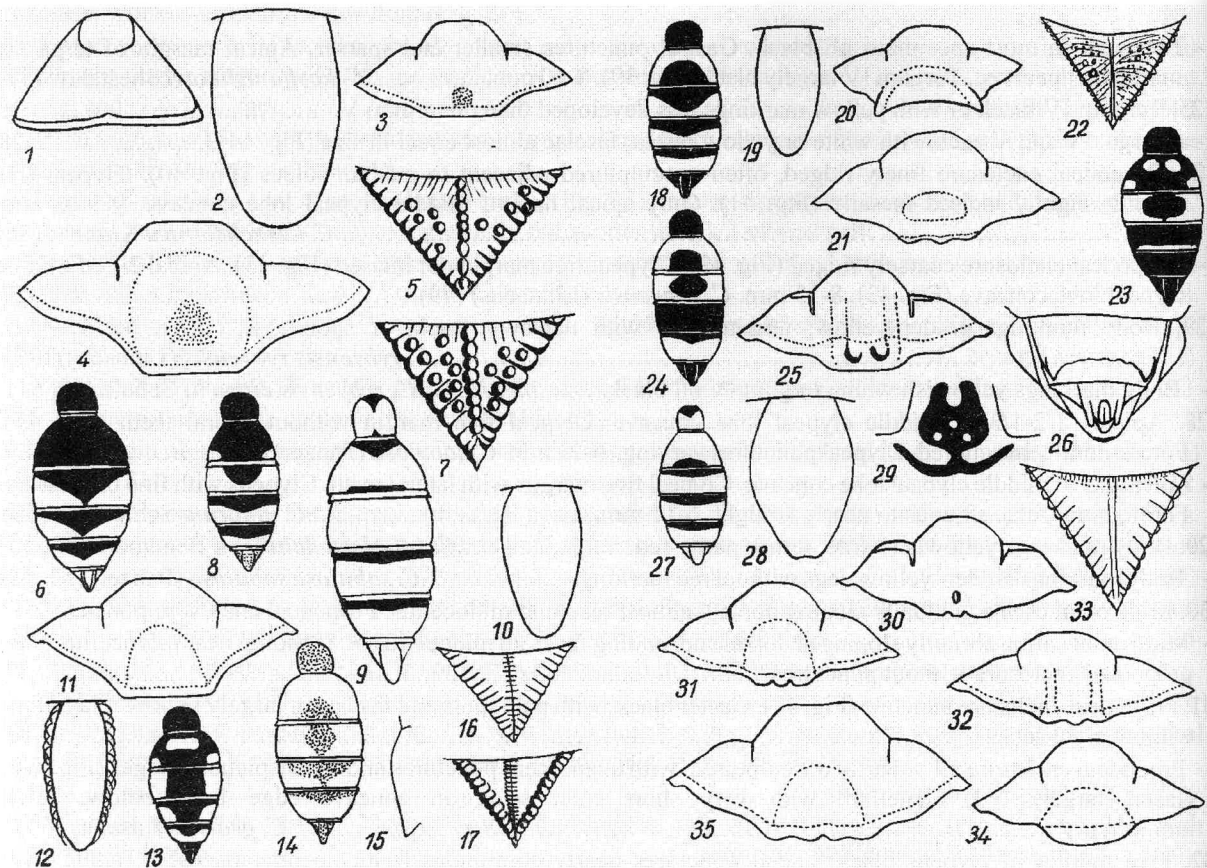
### Key to the species

1. Tergum I without small, apicomedian fossa; gaster with irregular color pattern: tergum II with yellow spot basally or with 3 spots (one basal, two posterolateral) or with basal spot and apical fascia, in some specimens all black or all yellow; remaining terga with different pattern.....2
- Tergum I (also following terga in some species) with small, apicomedian fossa. Gaster with regular color pattern: tergum II and following terga each with pale apical fascia (Fig. 113), fasciae continuous or interrupted; in some specimens gaster all yellow or all red.....78
2. Sternum II basally with well-defined, semicircular plate (Fig. 1) or, if plate ill defined, clypeal middle lobe of female concave mesally and setae on free margin of lateral clypeal lobes of male not agglutinated.....3
- Sternum II without semicircular plate, in some species somewhat convex basally; clypeal middle lobe of female without median concavity.....56
3. Females.....4
- Males.....30
4. Midfrontal carina gradually sloping at dorsal end, almost reaching midocellus. Pygidial plate broad: its width not less than 1/2 of its length (Fig.2) .....5
- Midfrontal carina abruptly sloping at dorsal end, ending far from midocellus (almost reaching midocellus in *C. gracilis*). Pygidial plate narrower: its width less than 1/2 length; middle clypeal lobe mostly concave; concavity not more than 2/3 of its length from fore margin (Fig. 11).....6
5. Frons near orbit with no interspaces between punctures. Middle clypeal lobe with free margin broadly emarginate and concave (Fig. 3). Propodeal enclosure with transverse ridges, usually also with punctures (Fig. 5). Color pattern whitish. Tergum II all black in some specimens (Fig. 6). 10-13 mm.....
- .....*C. circularis dacica* Schletterer (12,15)
- Frons near orbit with well defined interspaces between punctures. Middle clypeal lobe with nearly straight foremargin (Fig. 4). Propodeal enclosure with large punctures and with short ridges near lateral margins (Fig. 7). Color pattern yellow. Tergum II partly yellow (Figs. 8, 9). 11-15 mm..... *C. dorsalis solskii* Radoszkowski (15,17)
6. Pygidial plate narrower, its length at least 2.5 x width, bordered by setae whose length is more than midocellar diameter (Fig. 12) .....7
- Pygidial plate broader, its length at most 2.2 x width, with shorter setae (Fig.19) .....9
7. Fasciae of terga III and IV interrupted mesally (Figs. 13, 14). .....8
- Fasciae of terga III and IV narrowed mesally, but not interrupted (Fig. 18). 9-15 mm.....
- .....*C. lunata lunata* A.Costa (23)
8. Clypeal free margin protruding forward (Fig. 15), black or brown. Ridges adjacent to lateral margin of propodeal enclosure fine (Fig. 16). Gaster black, with whitish-yellow spots (Fig. 13). 7.5-10 mm..... *C. lunata albicolor* Shestakov (23,25)
- Clypeal free margin not protruding forward (Fig. 15), pale-red, semitransparent. Ridges adjacent to lateral margins of propodeal enclosure rough (Fig. 17). Gaster in some specimens red or brown, with pale spots (Fig. 14). 8-10 mm. .... *C. dispar* Dahlbom (27)
9. Clypeus with semicircular swelling (along dorsal end of concavity) that ends on each side in a tooth (Fig. 20). 11 mm. ....*C. edolata* Shestakov (30)

- Clypeus without semicircular swelling (Fig. 21).....10
10. Gastral segments I-IV (sometimes all gaster) red or brown-red, without light spots or fasciae. Propodeal enclosure finely ridged and with inconspicuous punctures. Midfrontal carina long and gradually sloping at dorsal end. 7.4-10.7 mm. .... *C. gracilis* Kazenas (60)
- Gastral segments I-IV with different pattern. Propodeal enclosure coarsely ridged or smooth. Midfrontal carina short, abruptly sloping at dorsal end. .... 11
11. Tergum II with pale spot in posterolateral corner (Fig. 23), in some specimens connected with basal spot (Fig. 24), or all pale. Jugal lobe of hindwing usually not shorter than 1/3 of anal cell. .... 12
- Tergum II all black or with basal pale spot. Jugal lobe of hindwing usually shorter than 1/3, but longer than 1/4 of anal cell, a little longer than 1/3 cell in *C. turanica*.....21
12. Dorsal surface of terga III and IV concave in profile. Middle clypeal lobe with a pair of longitudinal swellings (Fig. 25). 8-11 mm. ....*C. eryngii* Marquet (31)
- Dorsal surface of terga III and IV plane. Middle clypeal lobe without longitudinal swellings.....13
13. Free margin of middle clypeal lobe straight (Fig. 11)..... 14
- Free margin of middle clypeal lobe with small, median tooth (tooth ill defined in *C. icta* and *C. barchanica*) (Figs. 30, 31). .... 17
14. Sternum V convex, but not acutely prominent posterolaterally. Pygidial plate usually with little incision (Fig. 28). Propodeal side without oblique ridge behind spiracle. Vertex yellow with black spot (Fig. 29). 6-7 mm. ....*C. angelica* Kazenas (40)
- Sternum V acutely prominent posterolaterally (Fig. 26). Pygidial plate usually without incision. Propodeal side with or without oblique ridge behind spiracle. Vertex usually all black.....15
15. Terga I and IV all black (Fig. 24), in some specimens tergum I with little pale spots or narrow fascia. 8-13 mm. *C. fimbriata* (Rossi) (17) .....16
- Tergum I largely yellowish-white (Fig. 27), with black base and in some specimens with dark fascia near apical margin. Tergum IV with broad pale fascia or all pale (Fig. 27). 8-10 mm. .... *C. shestakoviana* Gussakovskij (21)
16. Pale body markings whitish. Mesopleuron and propodeal side without pale spots. Tergum V black or with apical pale fascia. ....*C. fimbriata pallidopicta* Radoszkowski (17,20)
- Pale body markings yellow. Mesopleuron with pale spot. Propodeal side in some specimens with pale spot. Tergum V all pale-yellow. ....*C. fimbriata cogens* Kohl (17,20)
17. Clypeus with small, sharp, laterally compressed tubercle in the middle near free margin (Fig. 30). Jugal lobe of hindwing approximately equal to 1/2 of anal cell. Propodeal side with acute oblique ridge behind spiracle. 8-9 mm. ....*C. spinifera* Kazenas (42)
- Clypeus without sharp tubercle (Fig. 31). Jugal lobe of hindwing shorter than 1/2 of anal cell. .... 18
18. Medial tooth of foremargin of middle clypeal lobe ill defined (Fig. 32)..... 19
- Tooth on foremargin of medial clypeal lobe well defined, broad apically (Fig. 31).....20
19. Propodeal side without oblique semitransparent ridge. Concavity of middle clypeal lobe not limited by swellings laterally. 7 mm. ....*C. icta* Shestakov (44)
- Propodeal side with oblique semitransparent swelling behind spiracle. Concavity of middle clypeal lobe limited by swellings laterally (Fig. 32). 8.5-9 mm. ....*C. barchanica* Kazenas (47)
20. Sternum II basally with elevated plate whose posterior margin is sharply delimited. 8-8.5 mm. .... *C. meditata* Shestakov (45)
- Sternum II basally convex, but without sharply delimited plate. 7-8 mm. .... *C. maracandica* Radoszkowski (63)
21. Propodeal enclosure smooth, shiny, only laterally with short, transverse ridges (Fig. 33)..... 22
- Propodeal enclosure all ridged, ridges in some specimens absent near middle sulcus.....25
22. Jugal lobe of hindwing only slightly shorter than 1/2 of anal cell. Middle clypeal lobe apically with oblique, prominent border (Fig. 34). 9-10.5 mm. ....*C. turanica* Kazenas (38)
- Jugal lobe of hindwing shorter than 1/3 of anal cell. Middle clypeal lobe without prominent border (Fig. 35) ..... 23
23. Clypeal free margin with narrow, triangular incision mesally, shallowly concave on each side (Fig. 35). Basal plate of sternum II narrow: its width almost equal to its length; reaching 1/2 length of sternum (Fig. 36). Gena angulate adjacent to occipital carina. 7-8.5 mm.....*C. turkestanica* Radoszkowski (34)
- Clypeal free margin not incised mesally (Fig. 37). Basal plate of sternum II wider, its width more than its length, usually less than half sternum length (Fig. 38). .... 24
24. Tergum I partly yellow. Gastral punctures coarse, their diameters 1/2 to 1/3 x midocellar diameters. Apical margin of terga I-V markedly upcurved, translucent. Tergum IV largely yellow. 9.5-10.5 mm. ....*C. andrei* Gussakovskij (58)

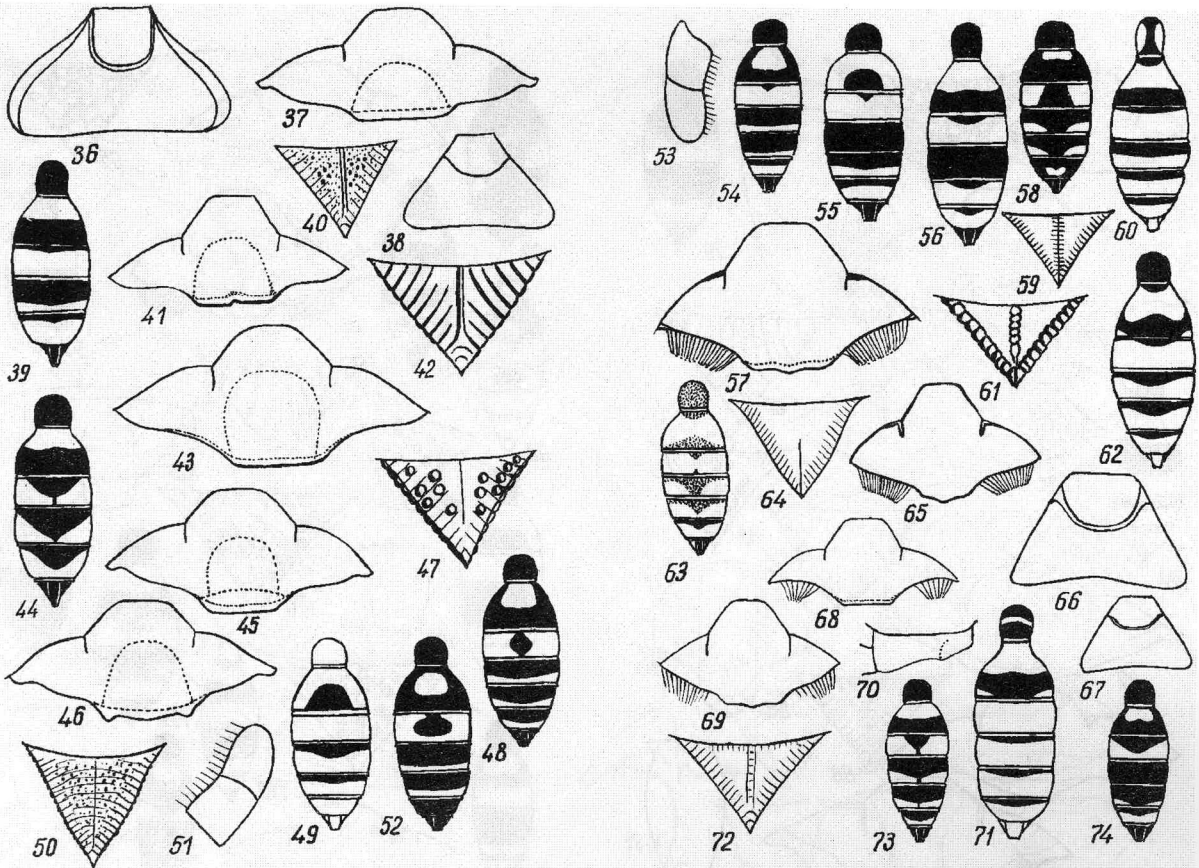


- Tergum I in most specimens all black. Gastral punctures smaller and sparser. Apical margin of terga not markedly upcurved. Tergum IV largely black (Fig. 39). 8-10 mm..... *C. koshantshikovi* Shestakov (37)
25. Tergum IV black or with yellow markings less developed than on tergum V. ....26
- Terga IV and V each with white or yellow fascia, fasciae almost equal in size (Fig. 44). ....28
26. Propodeal enclosure finely ridged, often unsculptured adjacent to median sulcus (Fig. 40). Clypeal free margin slightly incised mesally (Fig. 41). Only apical half of middle clypeal lobe concave. 9.5-10 mm. ....*C. kasachstanica* Kazenas (36)
- Propodeal enclosure coarsely ridged (Fig. 42). Clypeal free margin not incised (Fig. 43). Apical 2/3 of middle clypeal lobe concave (Fig. 43). 8-13 mm. *C. rybyensis* (Linnaeus) (49).....27
27. Body markings golden-yellow; tergum IV with narrow fascia or spots.....*C. rybyensis rybyensis* (Linnaeus) (49)
- Body markings yellowish white; tergum IV all black. ....*C. rybyensis dittrichi* Schulz (49, 51)
28. Apical 1/2-1/3 of middle clypeal lobe concave. Clypeal free margin without lateral teeth (Fig. 45). Forefemoral setae curved. Clypeal punctures varying. 6-11 mm. *C. sabulosa* (Panzer) (53) .....29
- Apical 2/3 of middle clypeal lobe concave. Clypeal free margin with lateral teeth. Clypeus with fine punctation. Forefemoral setae sinuous to nearly straight. 6-11 mm.....*C. colorata* Schletterer (56)
29. Body markings yellowish white, femur partly red.....*C. sabulosa dahlbomi* Beaumont (53, 55)
- Body markings golden-yellow, legs without red markings. ....*C. sabulosa sabulosa* (Panzer) (53, 55)
30. Midfrontal carina gradually sloping dorsad, almost reaching midocellus. Propodeal enclosure punctate....31
- Midfrontal carina abruptly sloping at dorsal end, ending far from midocellus or, if ending near midocellus, then propodeal enclosure without punctures.....33
31. Propodeal enclosure punctate (Fig. 47). Gaster black, with pale spots and fasciae or largely yellow. Flagellum without erect setae. ....32
- Propodeal enclosure all or partly unsculptured, with evanescent punctures and inconspicuous ridges (Fig. 50). Gaster largely red. Flagellum with very short erect setae on concave edge from below. 7.4-8 mm.....*C. gracilis* Kazenas (60)
32. Free margin of clypeus black. Facial punctures nearly contiguous (with no interspaces). Tegula with conspicuous punctures. Body markings yellowish white. Tergum III with black spot (Fig. 48). 7.5-12 mm.....*C. circularis dacica* Schletterer (12, 15)
- Free margin of clypeus red. Facial punctures separated by well-defined interspaces. Tegula inpunctate or with minute punctures. Body markings yellow. Tergum III without black spot (Fig. 49). 9-12 mm.....*C. dorsalis solskii* Radoszkowski (15, 17)
33. Flagellum with row of erect setae whose length is 8-10 times less than flagellum width (Fig. 51) .....34
- Flagellum with usual inconspicuous, appressed setae. ....36
34. Erect setae of flagellum sparse, perpendicular to flagellum surface (Fig. 51).....35
- Erect setae of flagellum dense, oblique (Fig. 53). Tergum II with yellowish white spot basally; tergum III almost all yellowish white (Fig. 54). 7.4-8.8 mm.....*C. turanica* Kazenas (38)
35. Tergum II with whitish yellow spot basally (Fig. 52) and in most specimens also in each posterolateral corner. Tergum III black basally. 7-8 mm. ....*C. eryngii* Marquet (31)
- Gaster all yellow or with brown spots of irregular shape. 9-11 mm. ....*C. edolata* Shestakov (30)
36. Jugal lobe of hindwing equal to 1/3 of anal cell or somewhat longer. Distance between hindocelli equal to distance between hindocellus and adjacent eye or slightly less.....37
- Jugal lobe of hindwing longer than 1/4, but shorter than 1/3 length of anal cell. Distance between hindocelli less than distance between hindocellus and adjacent eye. ....51
37. Propodeal enclosure with coarse irregular microsculpture, dull, with cross lateral ridges, with fine setae. Jugal lobe of hindwing shorter than 1/3 of anal cell. 9-10 mm. ....*C. kasachstanica* Kazenas (36)
- Propodeal enclosure smooth, only with short lateral ridges, asetose. Jugal lobe of hindwing usually longer than 1/3 of anal cell. ....38
38. Sternum VI acutely prominent posterolaterally .....39
- Sternum VI rounded or only slightly prominent posterolaterally .....41
39. Tergum II with yellow or whitish spot basally and also in each posterolateral corner, in some specimens posterolateral spots connected with basal one (Fig. 55); tergum IV in most specimens all black. 8-11 mm. *C. fimbriata* (Rossi) (17).....40
- Terga II and IV almost all yellowish white. 7.5-8 mm. .... *C. shestakoviana* Gussakovskij (21)
40. Body markings yellowish-white. Mesopleuron, propodeal side, and sternum VI black.....*C. fimbriata pallidopicta* Radoszkowski (17,20)



**Figs. 1-35:** 1- gastral sterna I and II of ♂ *Cerceris dorsalis solskii*, 2 - pygidial plate of ♀ *C. circularis dacica*, 3 - clypeus ♀ *C. circularis dacica*, 4 - clypeus of ♀ *C. dorsalis solskii*, 5 - propodeal enclosure of ♀ *C. circularis dacica*, 6 - gaster of ♀ *C. circularis dacica*, 7 - propodeal enclosure of ♀ *C. dorsalis solskii*, 8 - gaster of ♀ *C. dorsalis* (dark variation), 9 - gaster of ♀ *C. dorsalis solskii* (pale variation), 10 - pygidial plate of ♀ *C. fimbriata*, 11 - clypeus of ♀ *C. fimbriata*, 12 - pygidial plate of ♀ *C. lunata albicolor*, 13 - gaster of ♀ *C. lunata albicolor*, 14 - gaster of ♀ *C. dispar*, 15 - clypeus of ♀ *C. lunata albicolor* from lateral view, 16 - propodeal enclosure of ♀ *C. lunata albicolor*, 17 - propodeal enclosure of ♀ *C. dispar*, 18 - gaster of ♀ *C. lunata lunata*, 19 - pygidial plate of ♀ *C. eryngii*, 20 - clypeus of ♀ *C. edolata*, 21 - clypeus of ♀ *C. gracilis*, 22 - propodeal enclosure of ♀ *C. gracilis*, 23 - gaster of ♀ *C. eryngii*, 24 - gaster of ♀ *C. fimbriata*, 25 - clypeus of ♀ *C. eryngii*, 26 - apical part of gaster of ♀ *C. fimbriata* from below, 27 - gaster of ♀ *C. shestakoviana*, 28 - pygidial plate of ♀ *C. angelica*, 29 - spot on vertex of ♀ *C. angelica*, 30 - clypeus of ♀ *C. spinifera*, 31 - clypeus of ♀ *C. meditata*, 32 - clypeus of ♀ *C. barchanica*, 33 - propodeal enclosure of ♀ *C. turanica*, 34 - clypeus of ♀ *C. turanica*, 35 - clypeus of ♀ *C. turkestanica*.

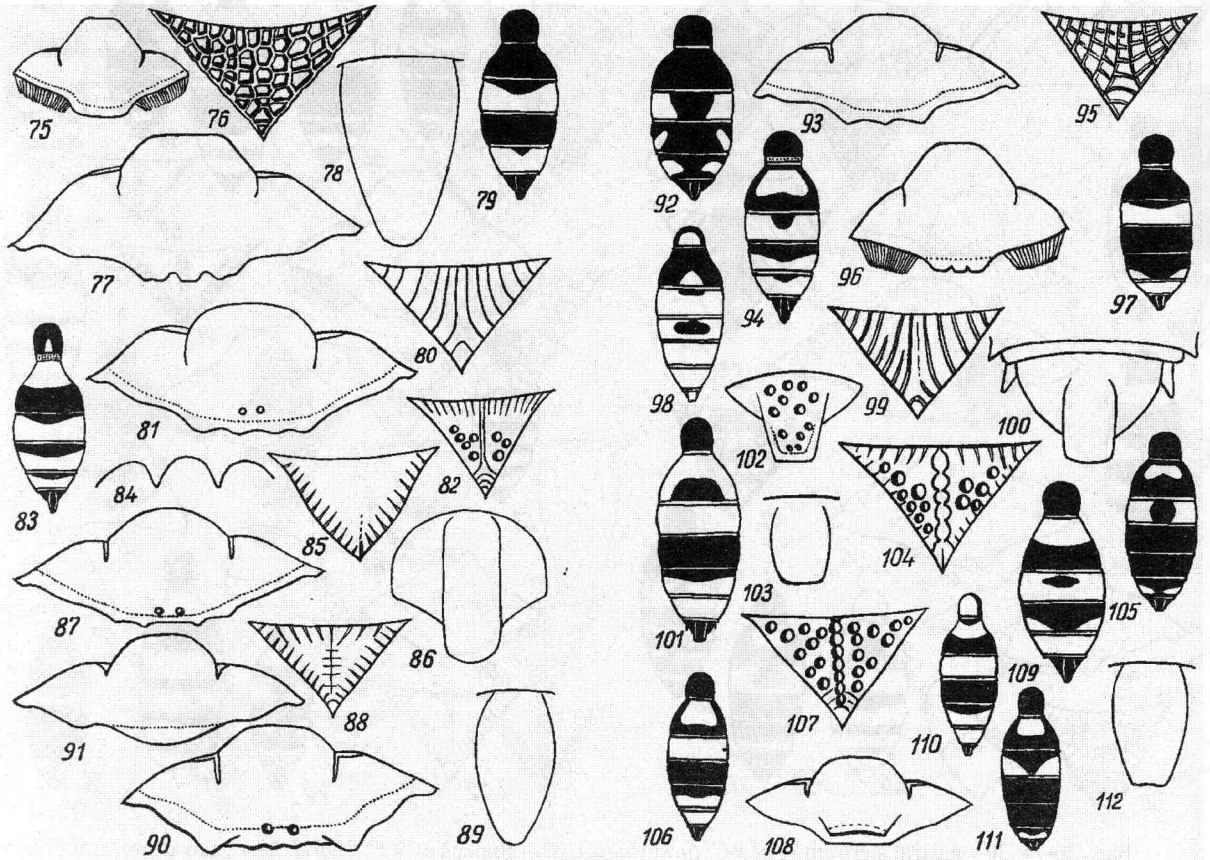
- Body markings yellow. Mesopleurae and in some specimens sides of propodeum with pale spots. Sternum VI with two yellow spots. .... *C. fimbriata cogens* Kohl (17, 20)
- 41. Tergum II with one yellow or whitish basal spot, not connected with posterior margin of tergum (Fig. 56) in *C. koshantshikovi* sometimes with little spot in each posterior corner. ....42
- Tergum II all yellow or with dark spot near posterior margin, in some specimens with 3 large spots .....45
- 42. Clypeal free margin with medial tooth (Fig. 57). ....43
- Clypeal free margin without medial tooth, almost straight. Propodeal enclosure with fine lateral ridges (Fig. 59). Terga III-V each with yellow continuous fascia (Fig. 60). 6.5-7.5 mm..... *C. meditata* Shestakov (45)
- 43. Terga III and V almost all yellowish-white, tergum IV black (Fig. 56). Propodeal enclosure with fine transverse lateral ridges.....44
- Terga III-V each with mesally interrupted fascia (Fig. 58). Propodeal enclosure with coarse, mesally interrupted, transverse ridges. 7-8.5 mm..... *C. lunata albicolor* Shestakov (23, 25)
- 44. Prominent basal plate of sternum II not less than 1/2 of sternum length. 6-8,5 mm..... *C. turkestanica* Radoszkowski (34)
- Prominent basal plate of sternum II less than 1/2 of sternum length. 8-9 mm..... *C. koshantshikovi* Shestakov (37)



**Figs. 36-74:** 36 – gastral sternum II of ♀ *C. turkestanica*, 37 – clypeus of ♀ *C. andrei*, 38 – gastral sternum II of ♀ *C. andrei*, 39 – gaster of ♀ *C. Koshantshikovi*, 40 – propodeal enclosure of ♀ *C. kasachstanica*, 41 – clypeus of ♀ *C. kasachstanica*, 42 – propodeal enclosure of ♀ *C. rybyensis*, 43 – clypeus of ♀ *C. rybyensis*, 44 – gaster of *C. sabulosa*, 45 – clypeus of ♀ *C. sabulosa*, 46 – clypeus of ♀ *C. colorata* (?), 47 – propodeal enclosure of ♂ *C. circularis dacica*, 48 – gaster of ♂ *C. circularis dacica*, 49 – gaster of ♂ *C. dorsalis solskii*, 50 – propodeal enclosure of ♂ *C. gracilis*, 51 – apical flagellomeres of ♂ *C. eryngii*, 52 – gaster of ♂ *C. eryngii*, 53 – apical flagellomeres of ♂ *C. turanica*, 54 – gaster of ♂ *C. turanica*, 55 – gaster of ♂ *C. fimbriata*, 56 – gaster of ♂ *C. turkestanica*, 57 – clypeus of ♂ *C. turkestanica*, 58 – gaster of ♂ *C. lunata albicolor*, 59 – propodeal enclosure of ♂ *C. meditata*, 60 – gaster of ♂ *C. meditata*, 61 – propodeal enclosure of ♂ *C. dispar*, 62 – gaster of ♂ *C. lunata lunata*, 63 – gaster of ♂ *C. dispar*, 64 – propodeal enclosure of ♂ *C. spinifera*, 65 – clypeus of ♂ *C. spinifera*, 66 – sternum II of ♂ *C. spinifera*, 67 – sternum II of ♂ *C. barchanica*, 68 – clypeus of ♂ *C. meditata*, 69 – clypeus of ♂ *C. maracandica*, 70 – sternum II of ♂ *C. meditata* from lateral view, 71 – gaster of ♂ *C. andrei*, 72 – propodeal enclosure of ♂ *C. colorata*, 73 – gaster of ♂ *C. sabulosa*, 74 – gaster of ♂ *C. rybyensis*.

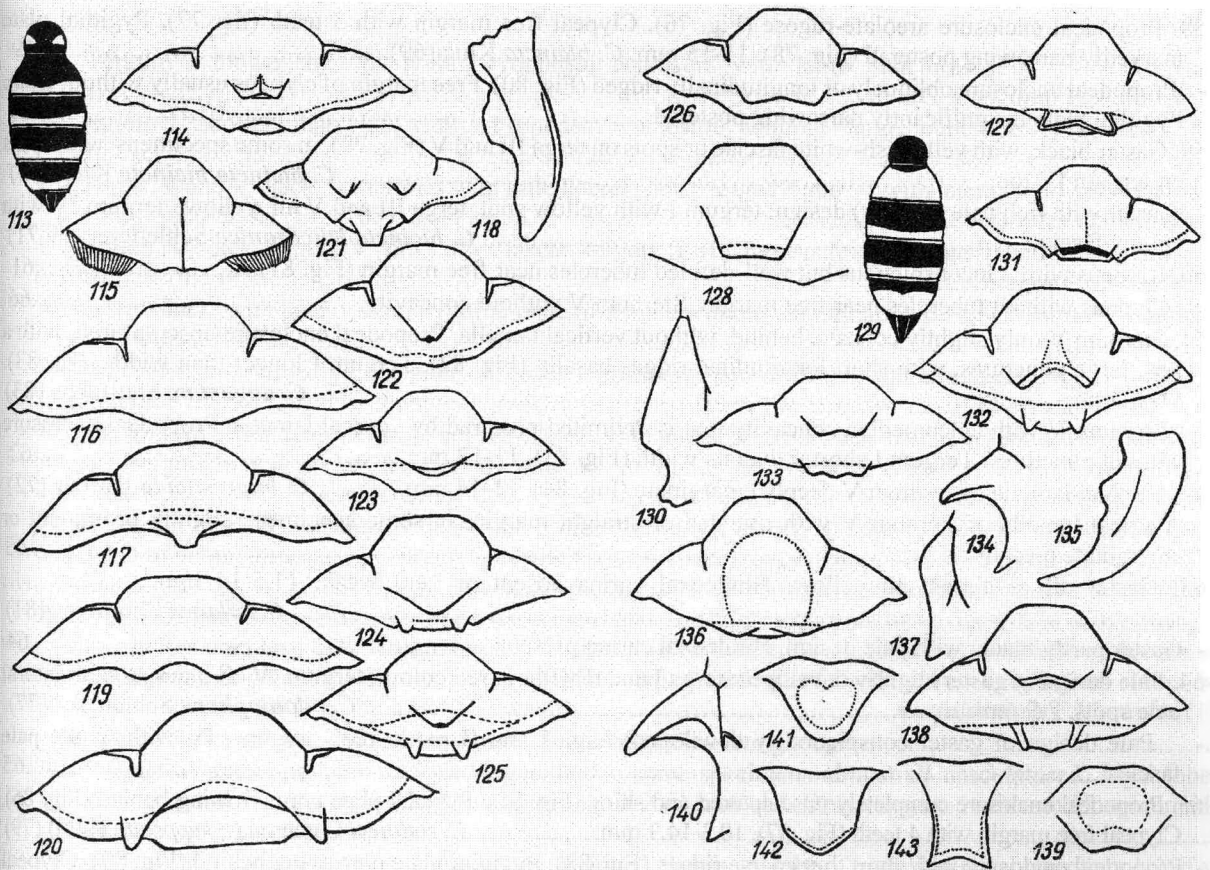
45. Propodeal enclosure, along each lateral margin, with deep sulcus that is divided by transverse ridges (Fig. 61). Gaster almost all yellow or with black spots and fasciae.....46  
 - Propodeal enclosure with fine short cross ridges laterally (Fig. 64). Gaster largely yellow.....47  
 46. Tergum IV with continuous yellow fascia or nearly all yellow; tergum I black, terga II-VI partly yellow (Fig. 62). 8-12 mm. ....*C. lunata lunata* Costa (23, 25)  
 - Tergum IV with interrupted yellowish-white fascia (Fig. 63). Dark design of gaster in most specimens with brown or red shade. 7-8 mm. ....*C. dispar* Dahlbom (27)  
 47. Clypeal free margin laterally with agglutined setae (Fig. 65). ....48  
 - Clypeal free margin laterally with not agglutined setae (Figs. 68,69)..... 49  
 48. Prominent basal plate of sternum II concave mesally, at least 0.5 of sternum length (Fig. 66). 7-8 mm.....*C. spinifera* Kazenas (42)  
 - Prominent basal plate of sternum II not concave, less than 0.4 of sternum length (Fig. 67). 6.5-7.8 mm. ....*C. barchanica* Kazenas (47)  
 49. Sternum II convex basally, but without well-defined basal plate. Clypeal free margin with small median tooth (Fig. 69). 7.8-8 mm.....*C. maracandica* Radoszkowski (63)  
 - Sternum II with well-defined basal plate. Clypeal free margin straight (Fig. 68).....50





**Figs. 75-112:** 75 – clypeus of ♂ *C. rybyensis*, 76 – propodeal enclosure of ♀ *C. bicincta*, 77 – clypeus of ♀ *C. bicincta*, 78 – pygidial plate of ♀ *C. bicincta*, 79 – gaster of ♀ *C. bicincta bicincta*, 80 – propodeal enclosure of ♀ *C. bupresticida*, 81 – clypeus of ♀ *C. bupresticida*, 82 – propodeal enclosure of ♀ *C. angustata*, 83 – gaster of ♀ *C. angustata*, 84 – vertical lamina of gastral sternum V of ♀ *C. bupresticida*, 85 – propodeal enclosure of ♀ *C. rothneyi*, 86 – pygidial plate of ♀ *C. rothneyi*, 87 – clypeus of ♀ *C. rothneyi*, 88 – propodeal enclosure of ♀ *C. maculata*, 89 – pygidial plate of ♀ *C. maculata*, 90 – clypeus of ♀ *C. maculata*, 91 – clypeus of ♀ *C. stratiotes*, 92 – gaster of ♀ *C. stratiotes*, 93 – clypeus of ♀ *C. integra*, 94 – gaster of ♀ *C. integra*, 95 – propodeal enclosure of ♀ *C. bicincta*, 96 – clypeus of ♂ *C. bicincta*, 97 – gaster of ♂ *C. bicincta bicincta*, 98 – gaster of ♂ *C. bicincta leucozonica*, 99 – propodeal enclosure of ♂ *C. bupresticida*, 100 – apical gaster part of ♂ *C. bupresticida* from above, 101 – gaster of ♂ *C. maculata*, 102 – pygidial plate of ♂ *C. kokuevi*, 103 – pygidial plate of ♂ *C. stratiotes*, 104 – propodeal enclosure of ♂ *C. angustata*, 105 – gaster of ♂ *C. stratiotes*, 106 – gaster of ♂ *C. integra*, 107 – propodeal enclosure of ♀ *C. rubida rubida*, 108 – clypeus of ♀ *C. rubida albonotata*, 109 – gaster of ♀ *C. rubida turbata*, 110 – gaster of ♂ *C. rubida turbata*, 111 – gaster of ♀ *C. rubida albonotata*, 112 – pygidial plate of ♀ *C. errata*.

- 50. Hind femur with dark spot on inner surface. Face coarsely punctate. 6.5-7.5 mm.....*C. meditata* Shestakov (45)
- Hind femur all pale-yellow. Face finely punctate. 5.5-7 mm.....*C. angelica* Kazenas (40)
- 51. Terga III-VI all yellow or nearly so (Fig. 71). Propodeal enclosure nearly all unsculptured. 7-9 mm.....*C. andrei* Gussakovskij (58)
- Terga III-VI black, with yellow or pale-yellow spots. Propodeal enclosure with oblique ridges or unsculptured mesally ..... 52
- 52. Propodeal enclosure unsculptured mesally (Fig. 72). Sternum VI slightly prominent posterolaterally. Forefemoral setae long, slightly sinuous. 9-9.5 mm.....*C. colorata* Schletterer (56)
- Propodeal enclosure all ridged. Sternum VI not prominent posterolaterally. Forefemoral setae shorter, arcuate. ....53



**Figs. 113-143:** 113 – gaster of ♀ *C. arenaria*, 114 – clypeus of ♀ *C. unidentata*, 115 – clypeus of ♂ *C. unidentata*, 116 – clypeus of ♀ *C. fodiens*, 117 – clypeus of ♀ *C. tinnula*, 118 – mandible of ♀ *C. fodiens fodiens*, 119 – clypeus of ♀ *C. ansa*, 120 – clypeus of ♀ *C. elegans*, 121 – clypeus of ♀ *C. freymuthi*, 122 – clypeus of ♀ *C. rossica*, 123 – clypeus of ♀ *C. shariniensis*, 124 – clypeus of ♀ *C. cupes*, 125 – clypeus of ♀ *C. conica*, 126 – clypeus of ♀ *C. quadricincta*, 127 – clypeus of ♀ *C. iliensis*, 128 – middle part of clypeus of ♀ *C. cerussata*, 129 – gaster of ♀ *C. quadricincta*, 130 – clypeus of ♀ *C. hohlbecki* from lateral view, 131 – the same of ♀ *C. pava*, 132 – the same of ♀ *C. betpakdalensis*, 133 – the same of ♀ *C. interrupta*, 134 – the same of ♀ *C. bracteata*, 135 – mandible of ♀ *C. bracteata*, 136 – clypeus of ♀ *C. sahlbergi*, 137 – clypeus of ♀ *C. sahlbergi* from lateral view, 138 – clypeus of ♀ *C. nargisa*, 139 – clypeal projection of ♀ *C. impercepta*, 140 – clypeus of ♀ *C. angustirostris* from lateral view, 141 – clypeal projection of ♀ *C. eversmanni*, 142 – the same of ♀ *C. lutphia*, 143 – the same of ♀ *C. angustirostris*.

53. Terga IV and V with yellow fasciae of equal size (Fig. 73). Row of agglutined setae on clypeal free margin almost 0.5 x distance that separates it from opposite row. 6-10 mm. *C. sabulosa* (Panzer) (53).....54

- Tergum IV, and in most specimens tergum V, all black, in some specimens with yellow spots; in latter case spots less developed on tergum IV than on tergum V (Fig. 74). Lateral rows of agglutined setae on clypeal free margin only a little narrower than space between rows (not more than 1.6 times) (Fig. 75). 6-11 mm. *C. rybyensis* (Linnaeus). .....55

54. Pale body markings golden-yellow. Legs without red .....*C. sabulosa sabulosa* (Panzer) (53,55)

- Pale body markings yellowish-white. Femur partly red..... *C. sabulosa dahlbomi* Beaumont (53,55)

55. Pale body markings yellowish-white.....*C. rybyensis dittrichi* Schulz (49,51)

- Pale body markings golden-yellow. ....*C. rybyensis rybyensis* (Linnaeus) (49)

56. Propodeal enclosure ridged or unsculptured, in some species with sparse punctures; in the latter case tergum I greatly longer than its width. Clypeus of female without prominent lamella near free margin.....57

- Propodeal enclosure punctate (Fig. 107). Clypeus of female with emarginate prominent lamella near free margin (Fig. 108).....76

57. Females.....58

- Males.....67

58. Propodeal enclosure areolate-rugose (Fig. 76). Clypeal free margin with 3 teeth (fig. 77). Pygidial plate markedly narrowing posterad (Fig. 78). 11-15 mm. *C. bicincta* Klug (69).....59
- Propodeal enclosure obliquely or longitudinally ridged (Fig. 80). Free margin of clypeus usually without teeth. Pygidial plate insignificantly narrowing posterad.....60
59. Gaster black, with yellowish-white fasciae or spots on terga III and V (Fig. 79), in some specimens with spots on tergum IV too. ....*C. bicincta bicincta* Klug (69)
- Gaster with rich pale (yellow) design: tergum I with yellow spot, terga III and V all yellow, tergum IV with yellow fascia..... *C. bicincta leucozonica* Schletterer (69,71)
60. Clypeus with 2 inconspicuous but well-defined tubercles near free margin (Fig. 81).....61
- Clypeus without tubercles near free margin. Sternum V without concavity.....66
61. Sternum V only slightly concave behind, without vertical lamella. Propodeal enclosure unsculptured, with a few, large punctures, with short longitudinal ridges basally (Fig. 82). Tergum I longer than width (Fig. 83). 11-12 mm. ....*C. angustata* Shestakov (83)
- Sternum V with apicomedian concavity that is delimited posterad by vertical lamella. Propodeal enclosure without punctures. Tergum I shorter than its width (Fig. 83). 11-12 mm.....62
62. Vertical lamella of sternum V deeply emarginate (Fig. 84). 11-14 mm.....*C. bupresticida* Dufour (72)
- Vertical lamella of sternum V with rounded or straight margin, in some specimens slightly prominent or emarginate mesally. ....63
63. Gaster all or almost all yellow. Hindcoxal carina absent or very weak. 11.5-14 mm.....*C. kokuevi* Shestakov (81)
- Gaster partly black, with pale design. Hindcoxal carina present. ....64
64. Pale design of gaster slightly developed: terga I and II without red colour, tergum IV all black or with lateral pale spots. 7-9 mm. .... *C. odontophora* Schletterer (77)
- Pale design of gaster conspicuously developed: terga I and II partly red, tergum IV with whole pale fascia.....65
65. Propodeal enclosure completely unsculptured and shiny (Fig. 85). Pygidial plate not narrowing behind (Fig. 86). Clypeal free margin with 4 teeth (Fig. 87). 10.3-14.3 mm.....*C. rothneyi* Cameron (= *supposita* Kohl) (79)
- Propodeal enclosure with short, but coarse ridges (Fig. 88). Pygidial plate narrowing behind (Fig. 89). Clypeal free margin with 2 teeth (fig. 90). 9.3-10.5 mm.....*C. maculata* Radoszkowski (75)
66. Free margin of middle clypeal lobe straight or arcuate, without lateral teeth (Fig. 91). Middle clypeal lobe slightly convex. Terga III-V in most specimens each with interrupted fascia (lateral spots) (Fig. 92). Pronotum and postscutellum in most specimens black. 9.5-10.5 mm..... *C. stratiotes* Schletterer (65)
- Free margin of medial clypeal lobe with little lateral teeth (Fig. 93). Middle clypeal lobe markedly convex. Terga III-V each with non-interrupted, mesally narrowed fascia (Fig. 94). Pronotum and postscutellum with pale-yellow spots. 8.5-13.0 mm.....*C. integra* F.Morawitz (67)
67. Propodeal enclosure areolate-rugose (Fig. 95), almost regularly ridged in some specimens, free margin of clypeal middle lobe with 3 broad, obtuse teeth (Fig. 96). 8.5-11 mm. *C. bicincta* Klug (69) .....68
- Propodeal enclosure regularly ridged (Fig. 99). ....69
68. Terga III and VI with yellowish-white fascia, tergum V with lateral spots (Fig. 97).....*C. bicincta bicincta* Klug (69)
- All terga with yellow fascia or spots (Fig. 98). ....*C. bicincta leucozonica* Schletterer (69,71)
69. Sternum VI acutely prominent posterolaterally in form of tooth (Fig. 100).....70
- Sternum VI without tooth posterolaterally. ....73
70. Tergum VI with tooth posterolaterally (Fig. 100). ....71
- Tergum VI without tooth posterolaterally .....72
71. Tergum I black. Propodeal enclosure ridged (Fig. 99). 8.5-13.0 mm..... *C. bupresticida* Dufour (72)
- Tergum I red. Propodeal enclosure unsculptured. 8-12 mm.....*C. rothneyi* Cameron (= *supposita* Kohl) (79)
72. Gastral terga III and VI with pale fascia, tergum II basally, IV and V or only V sometimes posterolaterally with little pale spots. 7-8.8 mm. ....*C. odontophora* Schletterer (77)
- Gastral terga III and VI all pale. Tergum II with large pale spot basally, connected with apical margin of tergum laterally (Fig. 101). Tergum V with pale fascia differently from tergum IV. 6-11 mm.....*C. maculata* Radoszkowski (75)
73. Pygidial plate with straight convergating backwards lateral margins (Fig. 102). Body with rich yellow design. Gaster almost all and legs yellow. 9-10 mm. ....*C. kokuevi* Shestakov (81)
- Pygidial plate with arcuate lateral margins (Fig. 103). Body black, with slightly developed yellow design. ...74

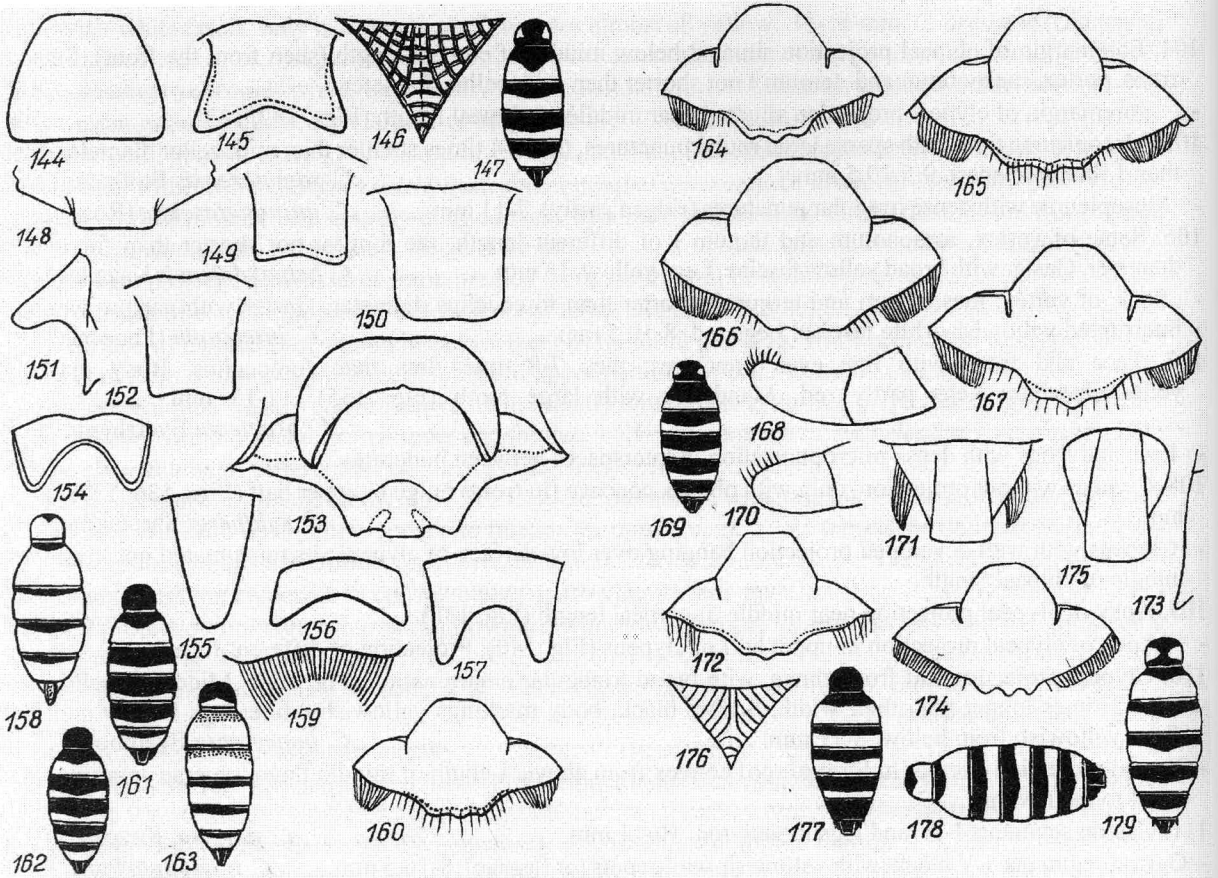


74. Tergum I longer than its width. Propodeal enclosure with large punctures (Fig. 104). 8.5-9 mm.  
.....*C. angustata* F.Morawitz (83)
- Tergum I shorter than its width. Propodeal enclosure without large punctures (Fig. 104). 8.5-9 mm.....75
75. Terga IV and V black, sometimes with little lateral spots; terga III and VI with lateral yellowish-white spots or interrupted fascia (Fig. 105). 8.5-11 mm. ....*C. stratiotes* Schletterer (65)
- Tergum IV black, tergum V with yellow fascia; tergum II with large pale spot, terga III and VI all yellow (Fig. 106). 7.5-10.5 mm. ....*C. integra* F.Morawitz (67)
76. Gaster black, with pale design. Pygidial plate of female without emargination on apical margin, rounded. *C. rubida* (Jurine) (85)..... 77
- Gaster reddish-yellow. Pygidial plate of female with emarginate or straight apical margin (Fig. 112). 7-11 mm  
.....*C. errata* Shestakov (88)
77. Punctures of propodeal enclosure not very dense, with interspaces between them. Tergum II with yellow basal spot. Terga III and V of female (III and VI in male) all yellow (Figs. 109, 110). 6-8 mm.....  
.....*C. rubida turbata* Shestakov (85, 88)
- Punctures of propodeal enclosure dense and coarse. Tergum II usually all black. Terga III and V of female (III and VI of male) in most specimens only with lateral pale spots (Fig. 111). 7-11 mm.....  
.....*C. rubida albonotata* Vander Linden (85, 88)
78. Propodeal enclosure with very fine transverse ridges and fine dense punctures. Jugal lobe of hindwing 7-9 times shorter than anal cell. Gastral terga with small, apicomedian fossa. Middle clypeal lobe of female with overhanging roof-like projection (Fig. 114). Middle clypeal lobe of male with narrow longitudinal carina, with 3 teeth on free margin (Fig. 115). 8-10.5 mm.....*C. unidentata* F.Morawitz (178)
- Propodeal enclosure with different sculpture. Jugal lobe of hindwing longer .....79
79. Propodeal enclosure with oblique ridges, but in some specimens almost all unsculptured. Jugal lobe of hindwing usually longer than 1/3, but shorter than 1/2 of anal cell. Only tergum I with small, apicomedian fossa. ....80
- Propodeal enclosure unsculptured or punctate; if ridged, than jugal lobe of hindwing not shorter than 1/2 of anal lobe. ....164
80. Females. ....81
- Males.....126
81. Clypeal middle lobe with lamellar, slightly upturned border or with lamellar projection that conceals clypeal free margin (Fig. 116). ....82
- Clypeal middle lobe with projection that not conceals clypeal free margin, or without projection and without lamellar upturned border. ....90
82. Plate projection near clypeal free margin narrow (its length approximately equal to width in middle) (Fig. 117). Propodeal enclosure largely unsculptured. 10-12 mm. ....*C. tinnula* Gussakovskij (104)
- Plate projection near clypeal free margin (or prominent border) broad (its length much less than width in middle) (Fig. 116). Propodeal enclosure with cross or oblique ridges, in some specimens partly unsculptured.....83
83. Tooth on inner mandibular margin strong, broad distally (Fig. 118).....84
- Shape of tooth on inner mandibular margin different .....86
84. Prominent border near free margin of middle clypeal lobe broadly, but not deeply emarginate (sometimes almost straight) (Fig. 116) or even arcuate. 9-15 mm. *C. fodiens* Eversmann (99).....85
- Projection near foremargin of middle clypeal lobe broad, with deep semicircular emargination (Fig. 119). Gastral terga almost all yellow, only with very narrow dark fascia basally. 11-12 mm.....  
.....*C. ansa* Shestakov (102)
85. Body and legs almost all yellow. ....*C. fodiens shur* Shestakov (99, 102)
- Thorax largely black, legs partly or all reddish-brown or red; terga black or reddish-brown basally. ....  
.....*C. fodiens fodiens* Eversmann (99)
86. Mandibles with large triangular tooth. Gaster red, apical terga with yellow fascia or spots. 9-12.5 mm.  
.....*C. aerata* Kazenas (95)
- Mandibles with teeth of different form, less developed.....87
87. Projecting plate of middle clypeal lobe thickened apically in middle and obtuse in front. Body largely reddish-yellow. 14-15 mm. ....*C. pseudoflavescens* Shestakov (96)
- Projecting plate of middle clypeal lobe not thickened apically in middle. Body black, gastral terga with yellow

- or yellowish-white fascia, only in *C. arenaria flavescens* almost all yellow. 11-16 mm. *C. arenaria* (Linnaeus) (91) .....88
88. Body markings yellowish-white, legs largely red.....*C. arenaria stecki* Schletterer (91,94)
- Body markings pale-yellow, legs largely or all yellow .....89
89. Body almost all yellow. ....*C. arenaria flavescens* Schletterer (91,94)
- Body black, with yellow design. ....*C. arenaria incognita* Eck (91,94)
90. Clypeus without projection, markedly even convex, with little hollow and 2 lateral tubercles in front. Terga II-V with deep emarginate pale-yellow fascia. 12.5 mm. ....*C. nikolaji* Kazenas (153)
- Clypeus with projection (with large lump pressed from the front in *C. sahlbergi*). .....91
91. Lower surface of clypeal projection below level of tentorial pits.....92
- Lower surface of clypeal projection not below level of tentorial pits (Fig. 134); projection of clypeus of *C. sahlbergi* in form of obtuse semicircular bulge in upper part of clypeus.....107
92. Middle clypeal lobe weakly convex above, with broadly emarginate crest-like projection (Fig. 120). Gaster reddish-yellow, with black and brown spots and fasciae. 15.5-16.5 mm.....*C. elegans* Eversmann (161)
- Middle clypeal lobe of different form. ....93
93. Clypeal projection in form of 2 teeth (Fig. 121). Clypeal foremargin with long blade-like projection (fig. 121). Gaster largely red, with pale-yellow spots and fasciae. 11 mm.....*C. freymuthi* Radoszkowski (168)
- Clypeal projection of different form. ....94
94. Projection of middle clypeal lobe conspicuously narrowing toward apex.....95
- Clypeal projection not narrowing or slightly narrowing toward apex, its apex no less than two midocellar diameters wide. (Fig. 126).....98
95. Clypeal projection emarginate apically (Fig. 122). Gaster largely or all red or yellowish-red. 9-13. ....  
.....*C. rossica* Shestakov (157)
- Clypeal projection not emarginate apically. ....96
96. Gaster yellowish-red. Clypeus all yellow. Projection of clypeus rounded apically (Fig. 123). 7.5-11.5 mm.....*C. shariniensis* Kazenas (114)
- Gaster black, with yellow markings. Clypeus black at least adjacent to free margin.....97
97. Clypeal projection broad, its apex near clypeal free margin (Fig. 124). Jugal lobe of hindwing not shorter than 1/4 of anal cell. Tergal punctures of two sizes, averaging more than 1 diameter apart. Sterna black. 9-12 mm.  
.....*C. cupes* Shestakov (111)
- Clypeal projection narrow, its apex near ventral 1/3 of clypeal length (Fig. 125). Jugal lobe of hindwing shorter than 1/5 of anal cell. Tergal punctures uniform in size, averaging about 1 diameter apart. Sterna in some specimens with yellow spots. 11-12 mm. ....*C. conica* Shestakov (168)
98. Thorax all black, in some specimens pronotum with two yellow spots. Punctures of terga III-V mesally fine (5-7 times smaller than midocellar diameter), more than 1 diameter apart. 9-13 mm.....  
.....*C. quadrfasciata* (Panzer) (108)
- Thorax with yellow or yellowish-white markings (at least pronotum, tegulae and postscutellum with pale spots). Tergal punctures varying. ....99
99. Tergal punctures sparse, fine (6 times smaller than midocellar diameter), at least on basal terga.....100
- Tergal punctures denser and coarser. ....101
100. Mesoscutum dull, microscopically reticulate between punctures. Body markings golden-yellow. Clypeus with projection near fore margin (Fig. 127). 10-12. ....*C. iliensis* Kazenas (113)
- Mesoscutum shiny, almost unsculptured between punctures. Body markings yellowish-white. Clypeus with short, emarginate projection below (Fig. 128).....*C. cerussata* Shestakov (115)
101. Pale fasciae of terga III and IV much narrower than fasciae of terga II and V (Fig. 129). Fore margin of clypeal projection situated near clypeal free margin (Fig. 126). 8-11 mm.....*C. quadricincta* (Panzer) (106)
- Pale fasciae of terga approximately equal, in some specimens interrupted in middle. ....102
102. Clypeal projection not hanging over clypeal surface (in lateral view) (Fig. 130). Face and frons with fine sparse punctures. Sterna, at least II and IV, with pale spots. 8-11 mm.....*C. hohlbecki* Shestakov (143)
- Clypeal projection hanging over clypeal surface (in lateral view). Face and frons with coarse dense punctures. Sterna black.....103
103. Terga I-V largely yellowish-white (or pale-yellow). Projection of clypeus in form of roof below (Fig. 131). The longest setae of frons, mesonotum and tergum I 1.5 times longer than foreocellus diameter. 9.3-10.5 mm. ....*C. pava* Kazenas (142)
- Gaster black, with yellowish-white spots or fasciae. Projection of clypeus even convex or in form of roof...  
.....104

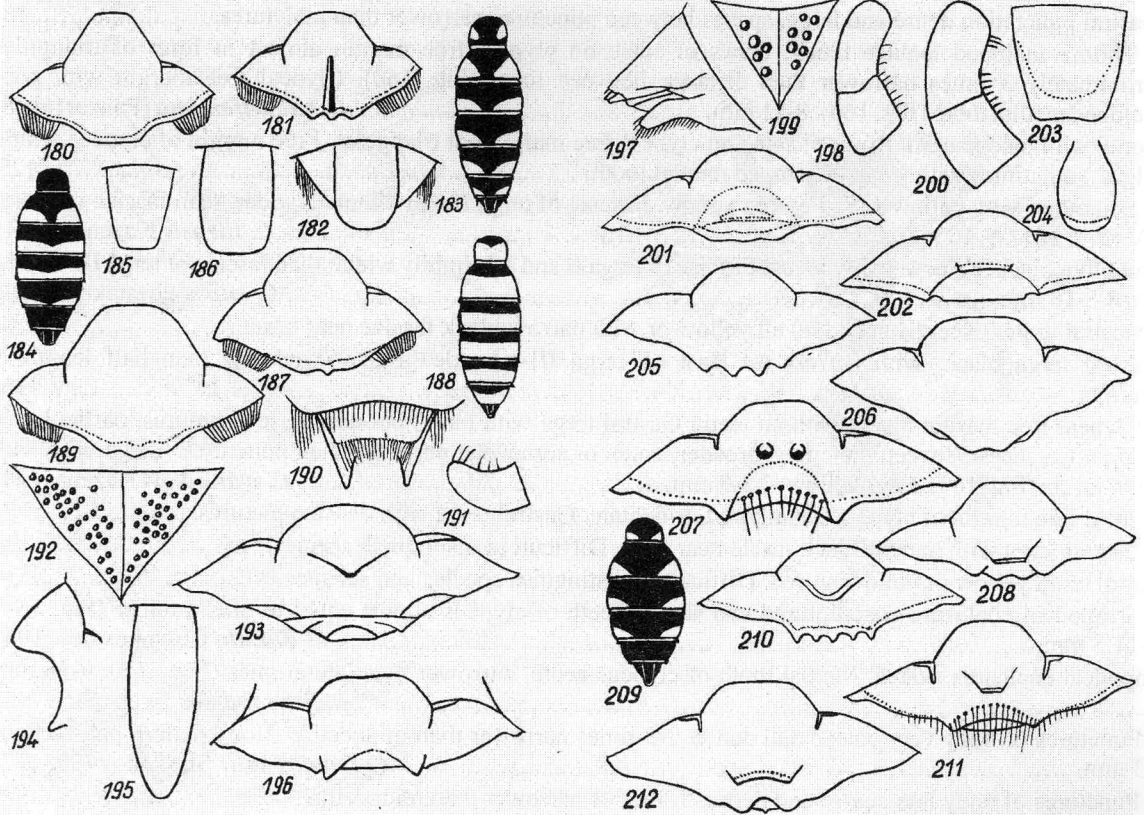
104. Foremargin of clypeal projection situated below middle of clypeal length (seen from the front). Setae of frons, vertex, mesonotum and tergum I not shorter than midocellus diameter ..... 105  
 - Foremargin of clypeal projection situated near middle of clypeal length (Figs. 132, 133)..... 106
105. Mesopleurae dull, with sparse large round punctures, that 3-4 times smaller than midocellar diameter, more than 1 diameter apart. 9.5-10.5 mm. .... *C. somotorensis* Balthasar (151)  
 - Mesopleurae with dense irregular punctures (ridged partly). 7-11 mm..... *C. quinquefasciata* (Rossi) (147)
106. Setae of vertex, mesonotum and tergum I of different length, the longest not shorter than foreocellus diameter. Gaster with broad yellow fasciae. Legs yellow. 13 mm..... *C. betpakdalensis* Kazenas (173)  
 - Setae of vertex, mesonotum and tergum I shorter than foreocellus diameter. Gaster with narrow whole or interrupted yellowish-white fasciae. Legs red. 8-10.5 mm..... *C. interrupta* (Panzer) (145)
107. Face and frons with fine even punctures; they 7-8 times less than foreocellus. Body markings yellowish-white. Legs partly red. Mandibles with large tooth (Fig. 135). 11-13 mm..... *C. bracteata* Eversmann (119)  
 - Face and frons with dense micropunctuation in interspaces between punctures. .... 108
108. Clypeus without projection, only with obtuse, concave (in front) bulge in upper half (Figs. 136, 137). 10-12 mm. .... *C. sahlbergi* Shestakov (149)  
 - Clypeus with well developed projection hanging over low surface of clypeus; its top situated not lower than middle of clypeal length. .... 109
109. Apex of clypeal projection near middle of clypeal length (Fig. 138). .... 110  
 - Apex of clypeal projection in upper half of clypeus (Fig. 140). Projection of different form. .... 112
110. Clypeal projection flat from above, with broad triangular emargination (Fig. 139). Middle flagellomerae 1.1-1.3 times longer than their width. Scapes black; body markings yellowish-white; legs largely dark-red, tibiae yellowish from below. 8-11 mm. .... *C. impercepta* Beaumont (127)  
 - Clypeal projection even or in form of roof convex from above. Length of middle flagellomerae approximately equal to their width. .... 111
111. Gastral segments I-IV and legs largely red. 10-11 mm. .... *C. nargisa* Kazenas (137)  
 - Gastral segments I-V black, with yellowish-white spots (or fasciae). 8-10.5 mm..... *C. interrupta* Panz. (145)
112. Clypeal projection strongly narrowing forwards (Figs. 141, 142). .... 113  
 - Clypeal projection not or slightly narrowing forwards. .... 114
113. Middle flagellomerae almost 1.5 times longer than their maximal width. Propodeal enclosure with longitudinal ridges. Legs red. 9-14 mm. .... *C. evermanni* Schulz (124)  
 - Middle flagellomerae not more 1.25 times longer than their maximal width. Propodeal enclosure largely unsculptured, only with sparse micropunctuation. Legs yellow. 11-12.8 mm. .... *C. luthia* Kazenas (164)
114. Clypeal projection somewhat widening in front, with concave lateral margins, with little emargination in front (Fig. 143). 10-11 mm..... *C. angustirostris* Shestakov (121)  
 - Clypeal projection not widening before end. .... 115
115. Clypeal projection with straight or almost straight foremargin (seen from above) (Fig. 144). Body markings yellowish-white, gaster black, with interrupted fasciae, last 1-3 fasciae in some specimens whole. 10-14 mm. .... *C. ruficornis* (Fabricius) (116)  
 - Clypeal projection with emargination in front. .... 116
116. Emargination of clypeal projection not pronounced (not deeper than 1/3 of projection length)..... 117  
 - Emargination of clypeal projection pronounced, deeper than 1/3 of projection length. .... 122
117. Clypeal projection with emargination equal 1/3 of its length (Fig. 145). Lateral margins of projection almost straight, divergating to top (Fig. 145). Tergum II with broad emarginate yellow fascia. Propodeal enclosure ridged in form of coarse cells (Fig. 146). 12.5 mm. .... *C. diana* Kazenas (170)  
 - Shape of clypeal projection different. Pattern of tergum II different. Propodeal enclosure ridged or unsculptured, but not with cells. .... 118
118. Gaster black or with yellow (yellowish-white) fasciae (in *C. shestakovi* segments II and III partly red). .... 119  
 - Gaster largely reddish-yellow or red, without yellow fasciae. .... 121
119. Gaster with large, but not very coarse punctures; they 3-4 times narrower than midocellus. Middle flagellomeres 1.1-1.3 times longer than their width. Propodeal enclosure all coarse ridged. Pale gastral pattern composed from lateral spots on tergum I and fasciae on terga II-V (Fig. 147). 11-16 mm..... *C. flavilabris* (Fabricius) (155)  
 - Gaster punctures approximately 2 times narrower than foreocellus. Length of middle flagellomeres approximately equal to their width. Propodeal enclosure largely unsculptured..... 120





**Figs. 144-179:** 144 – clypeal projection of ♀ *C. ruficornis*, 145 – the same of ♀ *C. diana*, 146 – propodeal enclosure of ♀ *C. diana*, 147 – gaster of ♀ *C. flavilabris*, 148 – fore margin of medial clypeal lobe of ♀ *C. scutifera*, 149 – clypeal projection of ♀ *C. scutifera*, 150 – the same of ♀ *C. shestakovi*, 151 – clypeus of ♀ *C. erythrogaster* from lateral view, 152 – clypeal projection of ♂ *C. kuznetzovi kuznetzovi*, 153 – clypeus of ♀ *C. sirdariensis*, 154 – clypeal projection of ♀ *C. ferusa*, 155 – pygidial plate of ♀ *C. ferusa*, 156 – clypeal projection of ♀ *C. laxata*, 157 – the same of ♀ *C. acuta*, 158 – gaster of ♀ *C. acuta*, 159 – apical part of gastral sternum VI of ♂ *C. arenaria* from below, 160 – clypeus of ♂ *C. quadrifasciata*, 161 – gaster of ♂ *C. iliensis*, 162 – the same of ♂ *C. cupes*, 163 – the same of ♂ *C. ivannikovi*, 164 – clypeus of ♂ *C. tinnula*, 165 – the same of ♂ *C. fodiens fodiens*, 166 – the same of ♂ *C. pseudoflavescens*, 167 – the same of ♂ *C. arenaria flavescens*, 168 – apical flagellomere of ♂ *C. arenaria*, 169 – gaster of ♂ *C. arenaria*, 170 – apical flagellomere of ♂ *C. quadricincta*, 171 – apical part of gaster of ♂ *C. bracteata* from below, 172 – clypeus of ♂ *C. bracteata*, 173 – middle clypeal lobe of ♂ *C. erythrogaster* from lateral view, 174 – clypeus of ♂ *C. erythrogaster*, 175 – pygidial plate of ♂ *C. confraga*, 176 – propodeal enclosure of ♂ *C. ferusa*, 177 – gaster of ♂ *C. ferusa*, 178 – the same of ♂ *C. scutifera*, 179 – the same of ♂ *C. nargisa*.

- 120. Middle clypeal lobe prominent in form of blade in front (Fig. 148). Clypeal projection with good developed emargination in front (Fig. 149). Thorax with pale spots. Terga II-V with deep emarginate pale-yellow fascia (especially II); tergum I with lateral spots. 10-13.5 mm.....*C. scutifera* Shestakov (129)
- Middle clypeal lobe not prominent in front. Clypeal projection almost without emargination in front (Fig. 150). Thorax all black. Tegulae yellowish-red. 11-12 mm.....*C. shestakovi* Gussakovskij (131)
- 121. Clypeal projection shorter than its length, angle between projection and clypeal face approximately equal 45° (Fig. 151). Head and thorax mostly black. Gaster red; segment VI (sometimes V too) black. 11-13 mm .....*C. erythrogaster* Kazenas (133)
- Clypeal projection lengthened, more raised than in previous species (Fig. 152). Head mostly, rich pattern of thorax and gaster almost all reddish-yellow. 12 mm..... *C. kuznetzovi kuznetzovi* Kazenas (139)
- 122. Maximal width of clypeal projection more than distance between tentorial pits (Fig. 153). Pale fascia of gastral tergum II with triangular emargination. 10-13 mm.....*C. sirdariensis* Radoszkowski (166)
- Maximal width of clypeal projection approximately equal to or less than distance between tentorial pits.....123



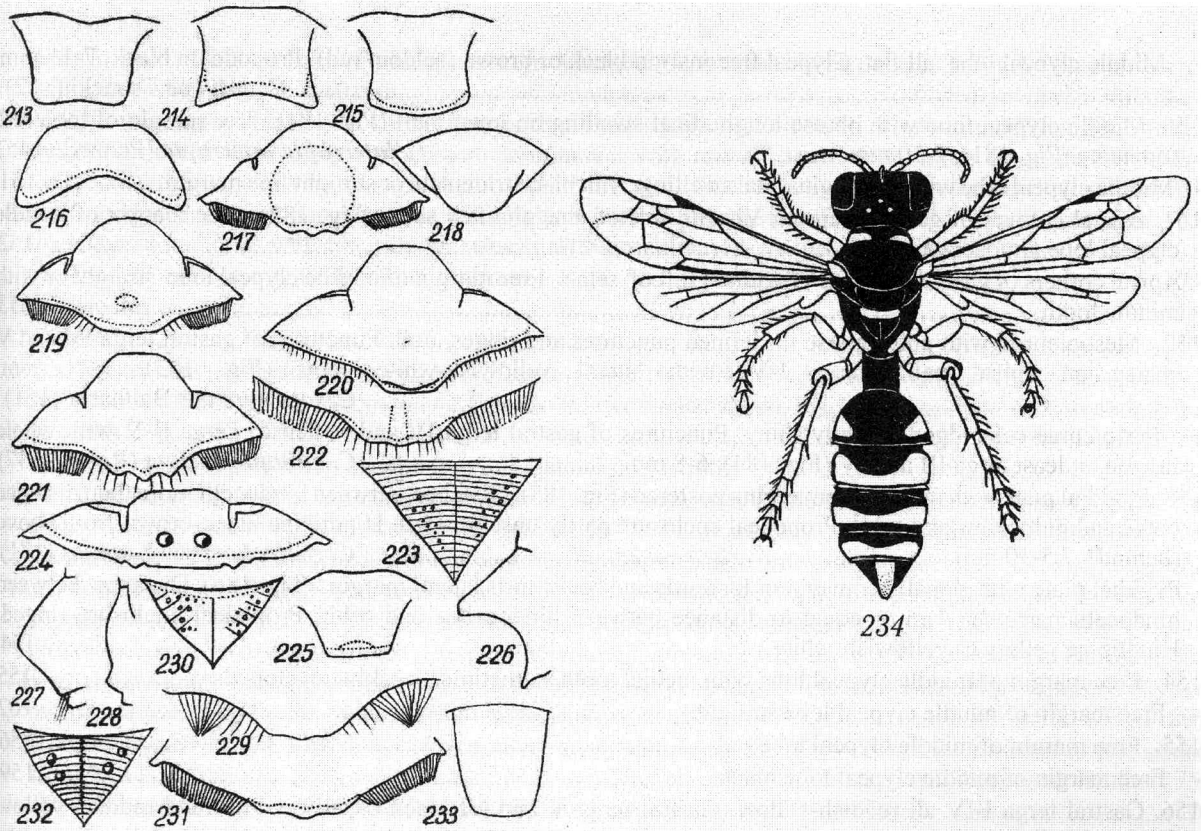
**Figs. 180-212:** 180 – clypeus of ♂ *C. antilope*, 181 – the same of ♂ *C. interrupta*, 182 – apical part of gaster of ♂ *C. somotorensis* from above, 183 – gaster of ♂ *C. somotorensis*, 184 – the same of ♂ *C. quinquefasciata*, 185 – pygidial plate of ♂ *C. zhelechovtzevi*, 186 – the same of ♂ *C. rossica*, 187 – clypeus of ♂ *C. acuta*, 188 – gaster of ♂ *C. acuta*, 189 – clypeus of ♂ *C. sirdariensis*, 190 – apical part of gaster of ♂ *C. sirdariensis* from below, 191 – apical flagellomere of ♂ *C. eversmanni*, 192 – propodeal enclosure of ♀ *C. flavicornis*, 193 – clypeus of ♀ *C. flavicornis*, 194 – clypeus of ♀ *C. flavicornis* from lateral view, 195 – pygidial plate of ♀ *C. flavicornis*, 196 – clypeus ♀ *C. argentosa*, 197 – apical part of gaster of ♂ *C. flavicornis* from lateral view, 198 – apical part of antenna of ♂ *C. argentosa*, 199 – propodeal enclosure of ♂ *C. argentosa*, 200 – apical part of antenna of ♂ *C. tenuivittata*, 201 – clypeus of ♀ *C. antennata*, 202 – the same of ♀ *C. kurzenkoi*, 203 – pygidial plate of ♀ *C. kurzenkoi*, 204 – the same of ♀ *C. tetradonta*, 205 – clypeus of ♀ *C. tetradonta*, 206 – the same of ♀ *C. albofasciata*, 207 – the same of ♀ *C. furcata*, 208 – the same of ♀ *C. specularis punctosa*, 209 – gaster of ♀ *C. specularis punctosa*, 210 – clypeus of ♀ *C. turkmenica*, 211 – the same of ♀ *C. vicaria*, 212 – the same of ♀ *C. crenulifer*.

- 123. Clypeal projection 2.0-2.5 times broader than its length. ....124
- Length of clypeal projection approximately equal to width (Fig. 157). Gastral terga yellow, with very narrow basal black fascia (Fig. 158). 11-13 mm. ....*C. acuta* Radoszkowski (160)
- 124. Lateral margins of clypeal projection parallel or converging toward apex. .... 125
- Lateral margins of clypeal projection diverging toward apex. 8.5-12 mm.....*C. antilope* Tsuneki (122)
- 125. Lateral margins of clypeal projection slightly converging in front (Fig. 154). Pygidial plate markedly narrowed toward apex, rounded behind (Fig. 155). Gaster partly red; terga II-IV often with little yellow lateral spots. 10-14.5 mm. ....*C. ferusa* Kazenas (135)
- Lateral margins of clypeal projection parallel (Fig. 156). Pygidial plate inconspicuously narrowed. Gaster not red. 11 mm. ....*C. laxata* Shestakov (163)
- 126. Gastral sternum VII with apical row of long setae, pointing toward midline of body (Fig. 159)..... 127
- Gastral sternum VII bare or with setae pointing posterad. .... 138
- 127. Gaster with sparse fine punctures; they not less than 5 times narrower than midocellus, and spaces between punctures wider than punctures. .... 128



- Gastral punctation dense and large, spaces between punctures narrower than punctures. ....130
- 128. Thorax included tegulae black. Rows of setae on clypeal free margin almost in form of triangular, approximately 3 times narrower than distance between them (Fig. 160). Clypeal free margin with good developed medial tooth (Fig. 160). 8-11 mm. ....*C. quadrifasciata* (Panzer) (108)
- Thorax with pale pattern. Rows of setae on clypeal free margin not triangular. Free margin of clypeus almost straight, sometimes with weak developed medial tooth. ....129
- 129. Scutellum with yellow spot. Femora yellow. Fasciae of terga II and VI much wider, than fasciae of terga III-V (Fig. 161). 9-10 mm. .... *C. iliensis* Kazenas (113)
- Scutellum black. Femora partly black. Fasciae of terga II and VI slightly wider, than fasciae of terga III-V (Fig. 162). 8.5-10 mm..... *C. cupes* Shestakov (111)
- 130. Gastral terga (except apical one) all yellow or with narrow black fasciae near base. ....131
- Gastral terga black, with narrow (at least on terga III-V) pale fasciae (narrower than half length of tergum).....136
- 131. Clypeal free margin black, without teeth. Gastral terga with large, but not dense punctures, particular on apical part. Spaces between punctures broader, equal or somewhat narrower than punctures. Terga with wide yellow fascia (Fig. 163). Legs yellow. 7.5-8 mm.....*C. ivannikovi* Kazenas (98)
- Clypeal free margin of clypeus usually red, tridentate. Gastral terga with dense punctures. ....132
- 132. Gastral terga with narrow black fascia near base. Difficult to distinguish species. ....133
- Gastral terga yellow or yellowish-red. Difficult to distinguish species and subspecies.....134
- 133. Propodeal enclosure unsculptured and shiny. Teeth of clypeus almost equal to one another (Fig. 164). 8.5-11.5 mm. .... *C. tinnula* Gussakovskij (104)
- Propodeal enclosure ridged. Medial tooth of clypeus acute, narrower than lateral ones (Fig. 165). 9-15 mm. .... *C. fodiens fodiens* Eversmann (99)
- 134. Punctures of body very coarse and dense, 2-3 times narrower than midocellus. Body pattern pale-yellow. 9-13 mm. ....*C. fodiens shur* Shestakov (99, 102)
- Punctures of body less coarse and dense, 3-4 times narrower than midocellus. ....135
- 135. Body pattern reddish-yellow. Teeth on clypeal free margin almost equal (Fig. 166). Apical article of antennae weakly curved. 12-14 mm. ....*C. pseudoflavescens* Shestakov (96)
- Body pattern pale-yellow. Medial tooth on clypeal free margin narrower and more prominent than lateral one (Fig. 167). Apical article of antennae conspicuously curved. 9-13 mm. ..*C. arenaria flavescens* Schletterer (94)
- 136. Last antennal article conspicuously curved, with some long setae apically (Fig. 168). Middle femora with short setae below. Pale fasciae of gastral terga II and III almost equal (Fig. 169). 11-14 mm. *C. arenaria* (Linnaeus) (91) .....137
- Apical antennal article slightly curved, only with very short setae. Middle femora with long erect setae below. Fascia of gastral tergum II wider than one of tergum III. 6.5-11 mm.....*C. quadricincta* (Panzer) (106)
- 137. Body pattern yellowish-white..... *C. arenaria stecki* Schletterer (91,94)
- Body pattern yellow..... *C. arenaria incognita* Eck (91,94)
- 138. Posterolateral corners of gastral sternum VI with tuft of dense agglutined setae (Fig. 171).....139
- Posterolateral corners of gastral sternum VI with tuft of sparse, not agglutined setae or without it.....150
- 139. Middle clypeal lobe even convex. Setae in rows of lateral clypeal lobes not agglutined (Fig. 172). Gastral punctation fine: punctures 5-8 times narrower than fore ocellus. 9-12 mm.....*C. bracteata* Eversmann (119)
- Middle clypeal lobe flattened (Fig. 173) or slightly concave (at least in middle). Setae in rows of lateral clypeal lobes agglutined (Fig. 174). Punctures on gaster large.....140
- 140. Clypeal free margin tridentate (Fig. 174). ....141
- Clypeal free margin straight or nearly so (Fig. 180). ....149
- 141. Legs yellow, in some species coxae yellow partly. ....142
- Legs with black spots and stripes. Coxae all black. Middle articles of antennae 1.6-1.8 times longer than their width. 10.5-12 mm. ....*C. ruficornis ruficornis* (Fabricius) (116)
- 142. Propodeal enclosure unsculptured and shiny. Pygidial plate broadened backwards, with rounded apical corners (Fig. 175). Gastral terga II-VI with yellow fascia. 10 mm. ....*C. confraga* Shestakov (151)
- Propodeal enclosure ridged (Fig. 176). Pygidial plate of different form. Gaster with yellow fasciae or almost all yellow or red. ....143
- 143. Middle articles of antennae shorter than their maximal wide. ....144
- Middle articles of antennae not shorter than their width. ....146
- 144. Antennal articles VI-X approximately 1.2 times shorter than their maximal width. Propodeal enclosure coarsely ridged (Fig. 176). Gastral sternum VII with row of short straight setae apically. Terga II-V with yellow fascia (Fig. 177). Flagellum red, brown from above partly. Clypeal free margin red. 9.5-11 mm. ....*C. ferusa* Kazenas (135)





**Figs. 213-234:** 213 – clypeal projection of ♀ *C. tuberculata*, 214 – the same of ♀ *C. morawitzi hissarica*, 215 – the same of ♀ *C. morawitzi desertorum*, 216 – the same of ♀ *C. deserticola*, 217 – clypeus of ♂ *C. antennata*, 218 – pygidial plate of ♂ *C. antennata*, 219 – clypeus of ♂ *C. deserticola*, 220 – the same of ♂ *C. furcata*, 221 – the same of ♂ *C. vicaria*, 222 – fore clypeal margin of ♂ *C. crenulifer*, 223 – propodeal enclosure of ♂ *C. straminea komarovii*, 224 – clypeus of ♀ *C. straminea komarovii*, 225 – clypeal projection of ♀ *C. uvarovi*, 226 – clypeus of ♀ *C. uvarovi* from lateral view, 227 – the same of ♀ *C. semenovi*, 228 – the same of ♀ *C. spinipectus accola*, 229 – clypeal foremargin of ♂ *C. straminea komarovii*, 230 – propodeal enclosure of ♂ *C. semenovi*, 231 – clypeal foremargin of ♂ *C. semenovi*, 232 – propodeal enclosure of ♂ *C. uvarovi*, 233 – pygidial plate of ♂ *C. uvarovi*, 234 - ♀ *C. dorsalis*.

- Antennal articles VI-X approximately 1.1 times shorter than their maximal width. Propodeal enclosure mostly unsculptured.....145
- 145. Gastral terga II-VI with wide pale-yellow fascia (Fig. 178). Tufts of setae on sternum VI situated on little projection. 8.5-11 mm.....*C. scutifera* Shestakov (129)
- Gastral terga II-VI almost all yellow. Sternum VI without projection, with tufts of long hairs. 10-11 mm. ....*C. shestakovi* Gussakovskij (131)
- 146. Length of middle antennal articles equal to their width or slightly more. ....147
- Length of middle antennal articles on average equal to 1.3 width. Gaster almost all yellow or reddish-yellow (usually except apex), sometimes with yellow fasciae. Flagellum black apically, partly reddish below. 7.5-10 mm. *C. kuznetzovi* Kazenas (139)..... 148
- 147. Gastral terga I-IV almost all yellowish-red. Apical margin of gastral sternum VII almost bare. Propodeal enclosure oblique ridged. Flagellum blackish-brown mostly, red partly. 10.5-11 mm. ....*C. erythrogaster* Kazenas (133)
- Gastral terga I-VI with narrowed or interrupted in middle yellow fasciae (fig. 179). Propodeal enclosure unsculptured largely. Flagellum red mostly, brownish partly. 10-10.5 mm. .... *C. nargisa* Kazenas (137)
- 148. Clypeal free margin yellowish-red. Propodeum and usually mesothorax with lateral yellow spots. Gastral terga almost all (sometimes except apex) yellow. 9-10 mm.....*C. kuznetzovi kuznetzovi* Kazenas (139)
- Clypeal free margin black or brown. Propodeum and mesothorax without lateral yellow spots. Gastral terga black or red, with yellow fasciae. 7.5-9 mm.....*C. kuznetzovi turgaica* Kazenas (141)
- 149. Middle clypeal lobe slightly convex laterally, flattened in middle. Clypeal free margin red or reddish-yellow. Propodeum with yellow spots. 8-10 mm.....*C. hohlbecki* Shestakov (143)

- Middle clypeal lobe all flat. Clypeal free margin black or brown (seldom red). Propodeum black. 7-11 mm. .... *C. antilope* Tsuneki (122)
- 150. Middle clypeal lobe with obtuse longitudinal swelling on lower half (Fig. 181). Free margin of lobe red, tridentate (Fig. 181). 7-10 mm. .... *C. interrupta interrupta* (Panzer) (145)
- Middle clypeal lobe without longitudinal swelling, with black tridentate or straight free margin. .... 151
- 151. Apical corners of gastral sternum VI with tuft of unagglutined setae (Fig. 182). Free margin of middle clypeal lobe almost straight. .... 152
- Apical corners of gastral sternum VI without tuft of setae. Free margin of middle clypeal lobe straight or with middle tooth. .... 153
- 152. Mesopleuron with quite sparse ill-defined punctures and ridges, dull. Punctures of gastral terga IV and V sparse on apical half. Terga I-VI with lateral yellowish-white spots (Fig. 183). 9-11 mm. .... *C. somotorensis* Balthasar (151)
- Mesopleurae cell-ridged, slightly shiny. Punctures of gastral terga IV and V dense. Terga II-V with whole fasciae, at least terga III and IV (Fig. 184). 6-8 mm. .... *C. quinquefasciata* (Rossi) (147)
- 153. Pygidial plate with margins converging posterad (Fig. 185). Distance between hindocelli more than distance between hindocellus and orbit. Propodeal enclosure partly unsculptured. Hindtibiae black-brown from above (behind). 7.5-10 mm. .... *C. zhelochovtzevi* Kazenas (171)
- Pygidial plate with equally convergent forwards and backwards lateral margins (Fig. 186). Distance between hindocelli narrower than or equal to distance between hindocellus and orbit. Propodeal enclosure ridged. Hindtibiae yellow or yellowish-white. .... 154
- 154. Free margin of middle clypeal lobe with medial tooth, sometimes weakly developed. .... 155
- Free margin of middle clypeal lobe straight. .... 162
- 155. Free margin of middle clypeal lobe red. .... 156
- Free margin of middle clypeal lobe black. .... 159
- 156. Gastral terga I-IV all reddish-yellow. Gastral terga V and VI black basally, with broad reddish-yellow fasciae. Medial clypeal tooth weakly developed, broad, sometimes free margin of middle clypeal lobe almost straight. Apical margin of gastral sternum VII bare. 8.5-12 mm. .... *C. rossica* Shestakov (157)
- Gaster with wide yellow fasciae, sometimes terga almost all yellow, only black a little basally. .... 157
- 157. Middle clypeal tooth little and acute, narrower than lateral ones (Fig. 187). Gastral terga yellow, with narrow black fasciae basally (Fig. 188). Apical margin of sternum VII with short setae. 10-11 mm. .... *C. acuta* Radoszkowski (160)
- Middle clypeal tooth not narrower than lateral ones (Fig. 189). Gastral terga black, with broad yellow fasciae. .... 158
- 158. Hindmargin of gastral sternum VII with row of long pale-red setae (Fig. 190). 12-13 mm. .... *C. sirdariensis* Radoszkowski (166)
- Hind margin of gastral sternum VII with dense short setae laterally, bare in middle. 11-12 mm. .... *C. betpakdalensis* Kazenas (173)
- 159. Middle antennal articles 1.3-1.9 times longer than wide. Middle clypeal lobe slightly convex. Gastral terga with dense coarse punctures. Propodeal side usually with pale spot. 8.5-12.5 mm. .... *C. abdita* Kazenas (128)
- Middle antennal articles 1.1-1.3 times longer than wide. Middle clypeal lobe conspicuously convex. Gastral terga with not very dense and not large punctures. Propodeal side without spot. .... 160
- 160. Body pattern yellowish-white. 9-13 mm. .... *C. flavilabris laminata* Eversmann (155,157)
- Body pattern yellow. .... 161
- 161. Mesonotum with large not very dense punctures. Distance between hindocelli 1.05-1.1 times narrower than distance between hindocellus and orbit. Longest setae of vertex 2-2.5 times longer than foreocellar diameter. 9.5-12.5 mm. .... *C. flavilabris flavilabris* (Fabricius) (155)
- Mesonotum with very dense coarse punctures. Distance between hindocelli equal to 0.8 of distance between hindocellus and orbit. Longest setae of vertex almost 3 times longer than foreocellar diameter. 10.2 mm. .... *C. diana* Kazenas (170)
- 162. Clypeus slightly convex or flattened in middle, with black free margin. .... 163
- Clypeus conspicuously convex, with red free margin. Gastral terga I-VI with broad yellow fascia. Flagellum black, only basally and apically red. Lateral clypeal lobes with dense fine setae. Face with sparse fine punctures and dense micropunctuation. Gastral sternum VII with row of long setae. 9.5 mm. .... *C. lutphia* Kazenas (164)
- 163. Middle antennal articles on average 1.5 times longer than their maximal width. Apical article flat cut on the apex, conspicuously curved (Fig. 191). Abdominal punctation gradually decreasing and becoming sparse from

- base to apex. Hind margin of gastral sternum VII with short sparse (rare) setae. Terga II-VI with narrow yellowish-white fasciae. 8-10 mm. .... *C. eversmanni* Schulz (124)
- Middle antennal articles 1.3-1.4 times longer than their width. Last antennal article rounded apically. Gastral punctation even. Hind margin of gastral sternum VII with row of dense setae, more long laterally. Gaster yellow or reddish-yellow mostly. 12-15 mm. .... *C. elegans* Eversmann (161)
164. Propodeal enclosure punctate (Fig. 192), at least with some large (not fine) punctures, without ridges (in *C. argentosa* sometimes with fine ridges), usually with unsculptured longitudinal strip. .... 165
- Propodeal enclosure with different sculpture. .... 172
165. Females. .... 166
- Males. .... 169
166. Clypeus with triangular overhanging projection (Figs. 193, 194). Clypeal free margin with 4 teeth (Fig. 193). Jugal lobe of hindwing approximately 1.5 times shorter than anal cell. Pygidial plate 2.4-2.5 times longer than its width (Fig. 195). 14-17 mm. .... *C. flavicornis* Brulle (175)
- Clypeus without projection or with two little lateral projections. .... 167
167. Middle clypeal lobe conspicuously convex on upper part, with 2 lateral projections in form of tooth, with almost straight free margin. Gaster mostly yellow. 10-11.5 mm. .... *C. argentosa* Shestakov (189)
- Middle clypeal lobe flattened, without projections. Gaster black, with pale fasciae. .... 168
168. Hindfemoral and hindtibial venters with long setae below; setal length more than foreocellar diameter. Clypeus black or only with 2 yellow spots. Middle lobe almost without micropunctuation. 14-16 mm. .... *C. tenuivittata* Dufour (183)
- Hindfemoral and hindtibial venters with short setae below; setal length less than midocellar diameter. Clypeus usually yellow. Middle lobe with clear micropunctuation above. 13-17 mm. .... *C. media* Klug (180)
169. Gastral sternum VI with long projection covered with fine setae (Fig. 197). Last antennal article almost straight. 11-15 mm. .... *C. flavicornis* Brulle (175)
- Gastral sternum VI without projections. Last antennal article curved (Fig. 198). .... 170
170. Propodeal enclosure with some large punctures (Fig. 199). Gaster yellow. Midtarsomere I distinctly curved. 8.5-10.5 mm. .... *C. argentosa* Shestakov (189)
- Propodeal enclosure with many little punctures. Gaster black, with pale fasciae. .... 171
171. Antennal articles convex below, last article cut straight apically (Fig. 200). Setae on under surface of hindfemora not shorter than foreocellar diameter. Gastral sternum with erect setae. 12-14 mm. .... *C. tenuivittata* Dufour (183)
- Antennal articles not convex below, last article rounded apically. Hindfemora with very short fine setae. Gastral sternum with appressed setae. 9-15 mm. .... *C. media* Klug (180)
172. Propodeal enclosure all unsculptured, sometimes with micropunctuation. .... 173
- Propodeal enclosure with fine ridges, sometimes with fine punctation (Fig. 223), often mostly unsculptured. .... 201
173. Females. .... 174
- Males. .... 189
174. Clypeus without projection. .... 175
- Clypeus with projection (with two tubercles in *C. furcata*). .... 178
175. Pygidial plate not narrowed basally. .... 176
- Pygidial plate conspicuously narrowing basally (Fig. 204). Clypeus not concave. .... 177
176. Clypeus widely concave up to 2/3-3/4 of length from free margin, usually with cross ridge near free margin. Free margin of middle clypeal lobe almost straight (Fig. 201). Pygidial plate much longer than wide. 9.5-10.5 mm. .... *C. antennata* F. Morawitz (201)
- Clypeus convex above, conspicuously concave below, with cross arcuate carina over concavity (Fig. 202). Free margin of middle clypeal lobe almost straight (Fig. 201). Length of pygidial plate almost equal to width. 9.5-10.5 mm. .... *C. kurzenkoi* Kazenas (215)
177. Body with abundant yellow pattern. Mesothorax and propodeum with yellow lateral spots. Gastral sternum mostly and legs all yellow. Teeth on free margin of middle clypeal lobe large (Fig. 205). 8.6-9.7 mm. .... *C. tetradonta* Cameron (185)
- Body black, with yellowish-white pattern. Mesothorax and propodeum black, without lateral spots. Gastral sternum black. Teeth on free margin of middle clypeal lobe weakly developed (Fig. 206). 10-12 mm. .... *C. albofasciata* (Rossi) (187)
178. Middle clypeal lobe conspicuously concave near free margin, with a pair of tubercles above concavity, free margin markedly emarginate, each end of emargination prominent, tooth-like (Fig. 207). 13-14



- mm..... *C. furcata* F.Morawitz (195)
- Middle clypeal lobe without tubercles, with projection (Fig. 208). .....179
179. Clypeal projection situated in lower or middle part of clypeus.....180
- Clypeal projection situated in upper part of clypeus, lower face of projection reaching level of tentorial pits.....184
180. Foremargin of clypeal projection straight or nearly so (Fig. 208). .....181
- Foremargin of clypeal projection emarginate or rounded.....182
181. Body black mostly, gastral terga with yellowish-white lateral spots (Fig. 209). Mesopleuron without point, hind coxa carinate posteroventrally, pygidial plate narrower (about 2 times as long as width). 8-11 mm. .... *C. specularis punctosa* Schletterer (191, 193)
- Body pale-yellow mostly; gaster yellow, sometimes partly red. Mesopleuron with point, hindcoxa not carinate, pygidial plate wider (about 1.5 times as long as width). 7-9 mm. .... *C. vitticollis* F.Morawitz (197)
182. Clypeal projection overhanging, spoonlike concave from above, with evenly rounded foremargin. Free margin of middle clypeal lobe with 5 teeth (Fig. 210). 10 mm..... *C. turkmenica* Kazenas (203)
- Clypeal projection and free margin of middle clypeal lobe different..... 183
183. Clypeal projection in form of distally narrowing plate (lamella), situated in middle part of clypeus (Fig. 211). 12-16 mm..... *C. vicaria* Shestakov (193)
- Clypeal projection in form of cross arcuate carina, ending in lateral teeth, situated in lower half of clypeus (Fig. 212). 8-9 mm..... *C. crenulifer* Kazenas (199)
184. Clypeal projection not or somewhat shorter than its length, with straight or almost straight foremargin (Fig. 213).....185
- Clypeal projection broader than its length, with emarginate foremargin (Fig. 216).....188
185. Body mostly black, with yellowish-white pattern, sometimes partly red or brown. Gaster terga II-V black, sometimes red partly, with interrupted or emarginate yellowish-white fasciae. 17-25 mm..... *C. tuberculata* Villers (205)
- Body reddish-yellow or red. Basal gastral terga red or reddish-yellow, without distinct pale fasciae. 20-28 mm. *C. morawitzi* Mocsary (208).....186
186. Clypeal projection slightly broadened before apical margin, with acute lateral corners, with slightly emarginate foremargin (Fig. 214). Thorax mostly black. Gaster terga I and II and legs red. Terga III-V pale-yellow. 20-24 mm. .... *C. morawitzi hissarica* Kazenas (211)
- Clypeal projection not broadened before apical margin, if slightly broadened, its foremargin not emarginate (Fig. 215). Thorax red, reddish-brown or yellow mostly. ....187
187. Body including legs mostly yellow. 20-28 mm..... *C. morawitzi desertorum* Kazenas (210)
- Body including legs mostly red. 20-28 mm..... *C. morawitzi morawitzi* Kazenas (208)
188. Gaster yellow, with red pattern. Legs yellow. 17-20.5 mm..... *C. deserticola* F.Morawitz (212)
- Gaster and legs red (gastral terga III-VI with yellow lateral spots or deep emarginate fascia). 20-22 mm. .... *C. schlettereri* Radoszkowski (216)
189. Middle clypeal lobe conspicuously concave (Fig. 217). Pygidial plate short and broad, its length less than width (Fig. 218). Posterolateral corners of gastral sternum VI with flat brush of setae. 8-8.5 mm. .... *C. antennata* F.Morawitz (201)
- Middle clypeal lobe not concave or only very slightly concave in middle. Pygidial plate longer than wide. Posterolateral corners of gastral sternum VI without flat brush of setae. ....190
190. Clypeus with shallow concavity in middle. Free margin of its middle lobe straight (Fig. 219) or arcuate. Midtarsomere I curved.....191
- Clypeus without medial concavity. Foremargin of its middle lobe with tooth in middle (almost straight in *C. furcata* F.Mor.). Midtarsomere I nearly straight.....195
191. Gaster terga I-IV mostly yellow or red. Very difficult to distinguish species. ....192
- At least gastral tergum I black (sometimes reddish partly), others with yellowish-white spots or fasciae. 11-20 mm. .... *C. tuberculata* Villers (205)
192. Gaster segments I-IV, fascia of terga V and VI and legs yellow. 12.5-17 mm..... *C. deserticola* F.Morawitz (212)
- Gaster segments I-IV, fascia of terga V and VI and legs reddish yellow. 15-25 mm. *C. morawitzi* Mocsary (208).....193
193. Gaster without reddish-brown spots. ....194
- Gaster tergum I and triangular spot near base of terga II-IV reddish-brown. 14-16 mm. .... *C. morawitzi hissarica* Kazenas (211)

## New and little known species

194. Yellow color of gaster with clear reddish shade. 15-25 mm.....*C. morawitzi morawitzi* Mocsary (208)  
 - Yellow color of gaster without reddish shade. 15-25.....*C. morawitzi desertorum* Kazenas (210)
195. Clypeus with small projection near free margin (Fig. 220). Lateral clypeal lobes without row of agglutined setae (Fig. 220). Gastral sterna III-VI with dense long setae (they approximately 1.5 times longer than diameter of midocellus). 12-13mm. ....*C. furcata* F.Morawitz (195)  
 - Clypeus without projection near free margin. Lateral clypeal lobes with row of agglutined setae (Fig. 221). Gastral sterna with short sparse setae. ....196
196. Middle antennal articles longer than wide.....197  
 - Middle antennal articles not longer than wide. ....199
197. Middle clypeal lobe conspicuously convex on upper part. Clypeus with fine, rather sparse punctures. Rows of setae on clypeal free margin almost equal to distance between them (Fig. 221). Distance between hindocelli less than distance between hindocellus and orbit. 8.5-12.8 mm.....*C. vicaria* Shestakov (193)  
 - Middle clypeal lobe evenly convex. Clypeus and face with coarse dense punctures. Rows of setae on free clypeal margin 1.5-2.5 times narrower than distance between them. Distance between hindocelli more than distance between hindocellus and orbit. ....198
198. Legs mostly yellow. Gastral sterna with yellow fascia, narrowed in middle. 7-9 mm.....  
 .....*C. tetradonta* Cameron = *barrei* Radoszkowski (185)  
 - Legs with dark spots. Gastral sterna usually all black. 8-10.5 mm. ....*C. albofasciata* (Rossi) (187)
199. Posterolateral corners of gastral sternum VI with tuft of dense, but not agglutined setae. Gaster black, with pale fasciae. 7.5-11.2 mm.....*C. specularis* Costa (191)  
 - Posterolateral corners of gastral sternum VI without tuft of dense setae. Gaster all or predominantly yellow.....200
200. Rows of agglutined setae on clypeal free margin about 0.7 times as long as space between them. Clypeus without longitudinal swelling. Middle antennal articles approximately equal to their width. 7-8 mm.....*C. vitticollis* F.Morawitz (197)  
 - Rows of agglutined setae on clypeal free margin approximately equal to space between them (Fig. 222). Clypeus with weakly developed longitudinal medial swelling. Length of middle antennal articles equal to 0.8-0.9 of width. 7-9 mm.....*C. crenulifer* Kazenas (199)
201. Females. ....202  
 - Males. ....205
202. Propodeal enclosure without punctures, ridged. Clypeus with 2 large projections in form of tooth in lower half (Fig. 224). Genal tooth present. 12-13.5 m.....*C. straminea komarovii* Radoszkowski (220, 222)  
 - Propodeal enclosure punctate (sometimes slightly) and finely ridged, at least in fore corners. Clypeus with 1 large projection. Genal tooth present or absent. ....203
203. Clypeal projection broad (Fig. 225), convex on upper surface, situated on upper part of clypeus (Fig. 226). Body mostly yellow. 12-14 mm.....*C. uvarovi* Kazenas (224)  
 - Form and situation of clypeal projection different. ....204
204. Apex of clypeal projection near middle of clypeal length (Fig. 227). Body mostly yellow. Genal tooth strong. 12-15 mm. ....*C. semenovi* Shestakov (222)  
 - Apex of clypeal projection in lower fourth of clypeal length (Fig. 228). Head and thorax partly black, gaster yellowish-red. Genal tooth absent. 16-20 mm.....*C. spinipectus accola* Kohl (217, 219)
205. Propodeal enclosure ridged, without punctures (Fig. 223). Setae on free margin of lateral clypeal lobes not agglutined (Fig. 229). 11-12,5 mm.....*C. straminea komarovii* Radoszkowski (220, 222)  
 - Propodeal enclosure largely unsculptured, with punctures (Fig. 230). Setae on free margin of lateral clypeal lobes agglutined (Fig. 231).....206
206. Gaster all yellow. Midtarsomere I not curved.....207  
 - Gaster yellowish-red, usually with black spots. Midtarsomere I markedly curved. 14-18 mm. ....  
 .....*C. spinipectus accola* Kohl (217, 219)
207. Propodeal enclosure only laterally with short oblique ridges (Fig. 230). Pygidial plate with almost parallel lateral margins. 11-12 mm. ....*C. semenovi* Shestakov (222)  
 - Propodeal enclosure with fine transverse ridges on all surface (Fig. 232). Pygidial plate with convergating backwards lateral margins. 12-13 mm. ....*C. uvarovi* Kazenas (224)

**Acknowledgements**

For the support of my work I thank Dr. W.J.Pulawski (California Academy of Sciences), and the Ernst Mayr Grants Committee (Museum of Comparative Zoology, Harvard University, Cambridge, Massachusetts).

**References**

**Kazenas V.L., 1978.** The digger wasps (Hymenoptera, Sphecidae) of Kazakhstan and Middle Asia. The determinant. *Alma-Ata, Nauka:1-172 (In Russian).*

**Kazenas V.L., 1984.** The digger wasps of the Genus *Cerceris* (Hymenoptera, Sphecidae) of Middle Asia and Kazakhstan. *Alma-Ata, Nauka:1-232 (In Russian).*

**Резюме**

**Казенас В.Л. Определительная таблица *Cerceris* Latreille (Hymenoptera, Sphecidae) Казахстана и Средней Азии.**

В статье дается определительная таблица для 102 среднеазиатских видов роющих ос рода *Cerceris*. Статья дополняет вышедшую в 1984 г. в Алма-Ате монографию автора "Роющие осы рода *Cerceris* Средней Азии и Казахстана".